

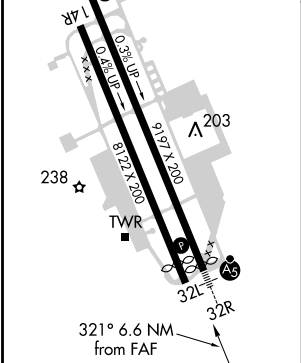
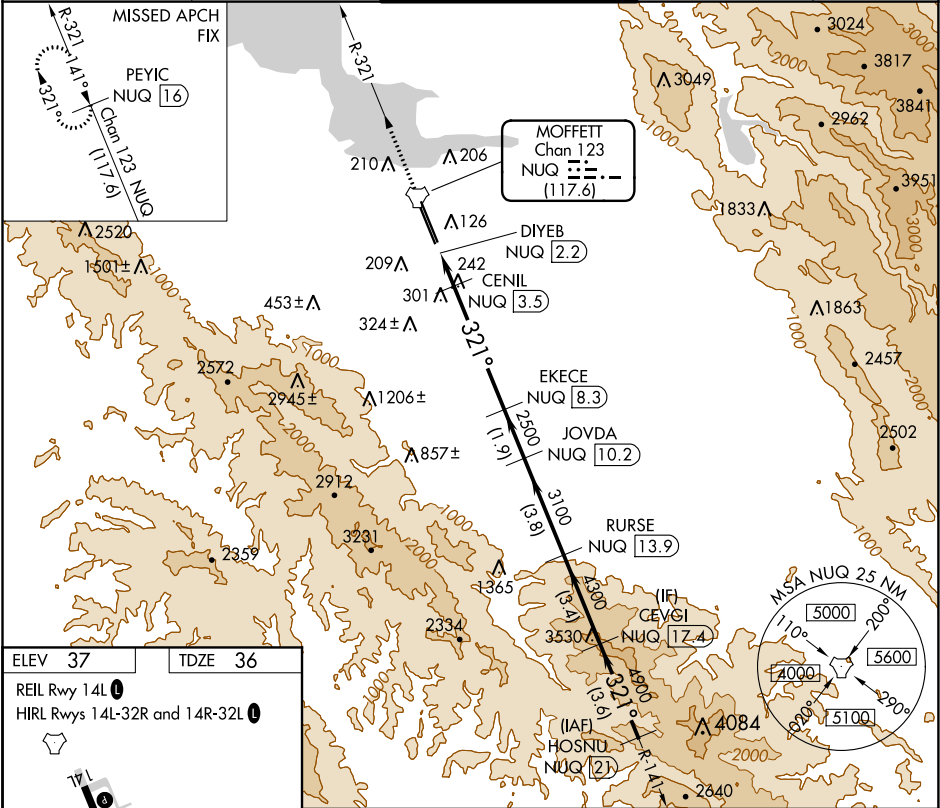
TACAN NUQ	APP CRS	Rwy Idg	7520
Chan 123	321°	TDZE	36
(117.6)		Apt Elev	37

TACAN RWY 32L

MOFFETT FEDERAL AFLD (NUQ)

RADAR required for procedure entry.		MISSED APPROACH: Climb to 3200 on NUQ TACAN R-321 to PEYIC/16 DME and hold.
	Rwy 32L helicopter visibility reduction below 3/4 SM NA.	

ATIS	NORCAL APP CON	MOFFETT TOWER ★	GND CON	CLNC DEL
124.175 283.0	120.1 290.25	119.55 (CTAF) 259.65	121.85 278.95	296.75



3200 ↑ NUQ R-321		PEYIC NUQ 16													
		CENIL NUQ 3.5		EKECE NUQ 8.3		JOVDA NUQ 10.2		RURSE NUQ 13.9		CEVGI NUQ 17.4		HOSNU NUQ 21			
		DIYEB NUQ 2.2		3.45° TCH 55		2500		3100		4300		321° 4900		5500	
		720													
0.5		0.8		0.5		4.8 NM		1.9 NM		3.8 NM		3.4 NM		3.6 NM	
CATEGORY		A		B		C		D		E					
S-32L		560-1		524 (600-1)		560-1½		524 (600-1½)							
CIRCLING		560-1 523 (600-1)		600-1 563 (600-1)		620-1½ 583 (600-1½)		780-2½ 743 (800-2½)		940-3 903 (1000-3)					

SW-2, 03 DEC 2020 to 31 DEC 2020

SW-2, 03 DEC 2020 to 31 DEC 2020