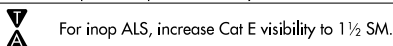
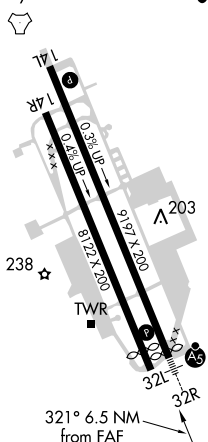



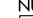



TACAN RWY 32R
MOFFETT FEDERAL AFLD (NUQ)

MISSED APPROACH: Climb to 3200 on NUQ TACAN R-321 to PEYIC/16 DME and hold.



REIL Rwy 14L **L**
HIRL Rwy 14L-32R and 14R-32L **L**



3200  NUQ R-321	PEYIC NUQ 16	VGSI and descent angles not coincident (VGSI Angle 3.00/TCH 55).			CEVGI NUQ 17.4	HOSNU NUQ 21
	CENIL NUQ 3.5	EKECE NUQ 8.3	JOVDA NUQ 10.2	RURSE NUQ 13.9		
	DIYEB NUQ 2.2	$\leq 3.48^\circ$ TCH 55		321°	5500	
 0.5	1.3 NM	4.8 NM	1.9 NM	3.8 NM	3.4 NM	3.6 NM
CATEGORY	A	B	C	D	E	
S-32R	560-1/2	529 (600-1/2)	560-1		529 (600-1)	
 CIRCLING	560-1 523 (600-1)	600-1 563 (600-1)	620-1 1/2 583 (600-1 1/2)	780-2 1/2 743 (800-2 1/2)	940-3 903 (1000-3)	