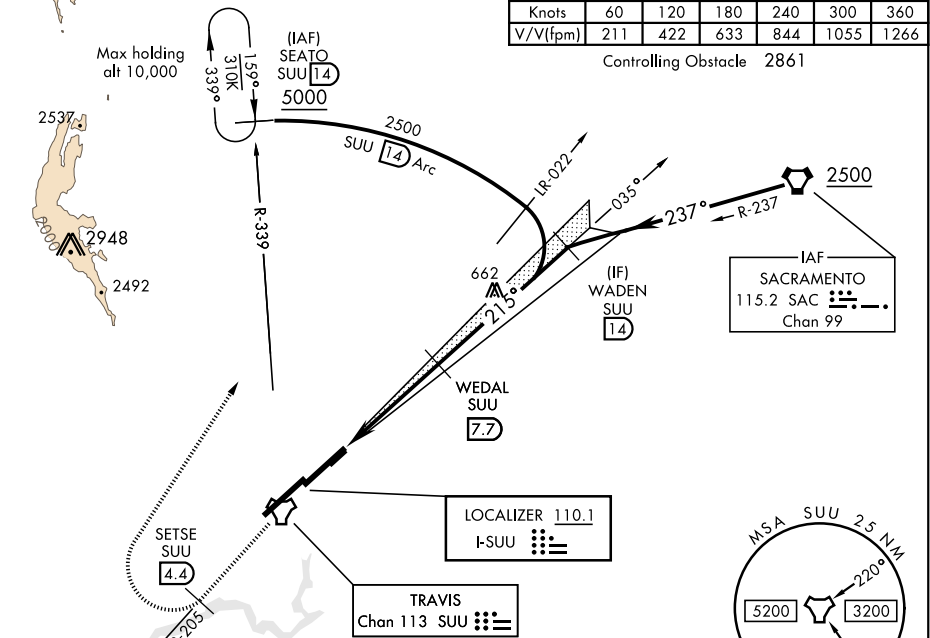


ILS RWY 21L (CAT II)

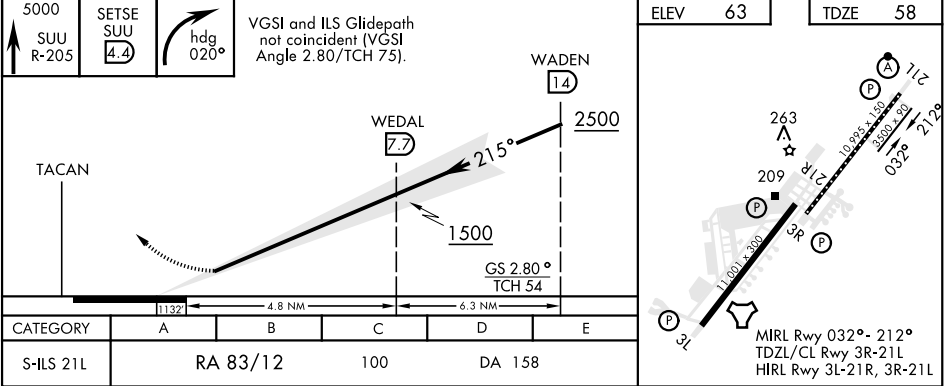
LOC I-SUU <b>110.1</b>	APCH CRS <b>215°</b>	Rwy Idg TDZE Arprt Elev <b>10,995</b> <b>58</b> <b>63</b>	AL-488 [USAF]	TRAVIS AFB (KSUU)
ATIS <b>135.55 292.125</b>	TRAVIS APP CON <b>119.9(S) 126.6(N) 281.45</b>	TRAVIS TOWER <b>120.75 254.4</b>	GND CON <b>121.8 289.4</b>	CLNC DEL <b>127.55 335.8</b>

CATEGORY II ILS SPECIAL AIRCREW & AIRCRAFT CERTIFICATION REQUIRED



ATC RADAR REQUIRED

EMERG SAFE ALT 100 NM 12,600 FROM "SUU" TACAN



ILS RWY 21L (CAT II)