

## LIBBO TRANSITION (LIBBO.OSVEE1)

ROVUE TRANSITION (ROVUE.OSVEE1)

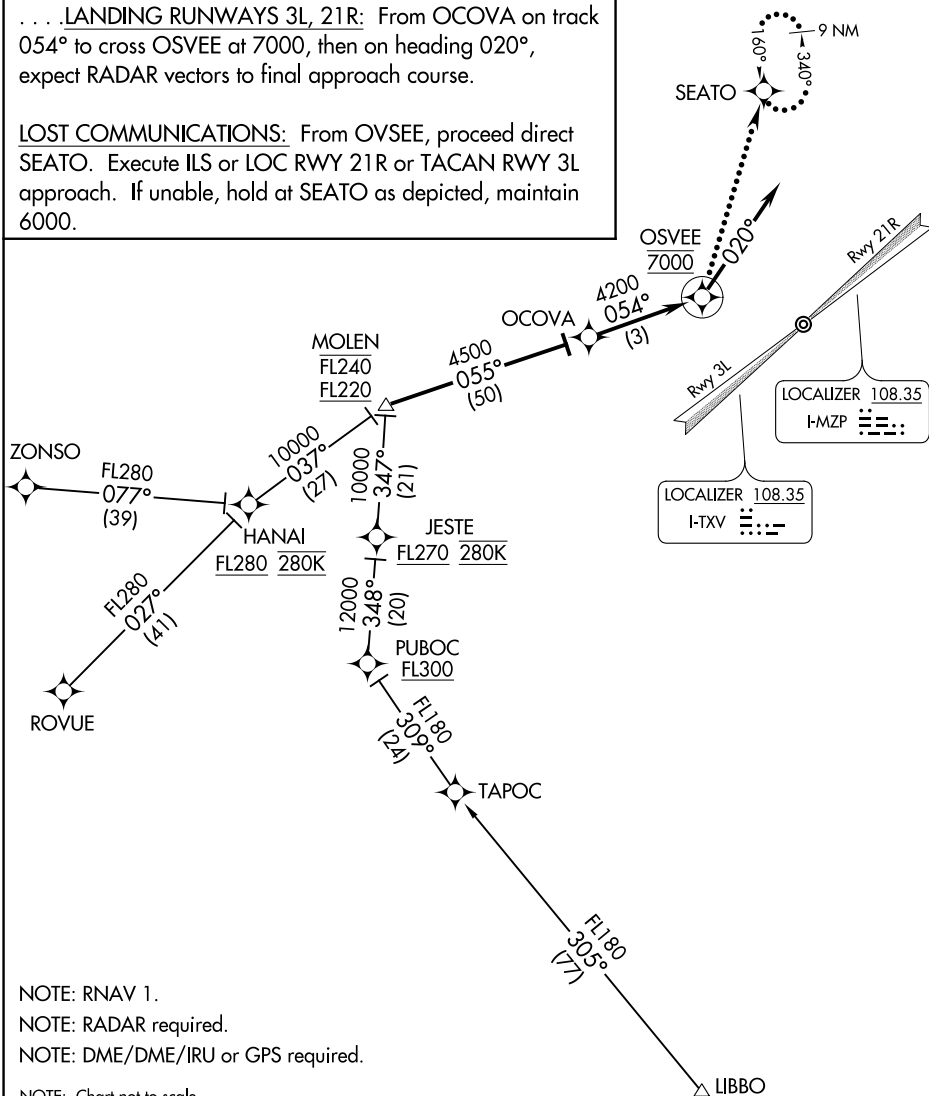
ZONSO TRANSITION (ZONSO.OSVEE1)

From MOLEN on track 055° to OCOVA, thence . . . .

...LANDING RUNWAYS 3L, 21R: From OCOVA on track 054° to cross OSVEE at 7000, then on heading 020°, expect RADAR vectors to final approach course.

**LOST COMMUNICATIONS:** From OVSEE, proceed direct SEATO. Execute ILS or LOC RWY 21R or TACAN RWY 3L approach. If unable, hold at SEATO as depicted, maintain 6000.

TRAVIS APP CON	
126.6	281.45 (N)
119.9	322.325 (S)
TRAVIS TOWER	
120.75	254.4
GND CON	
121.8	289.4
D-ATIS	
135.55	292.125



NOTE: RNAV 1.

NOTE: RADAR required.

NOTE: DME/DME/IRU or GPS required.

NOTE: Chart not to scale.

OSVEE ONE ARRIVAL (RNAV)

(OSVEE.OSVEE1) 10JAN13

FAIRFIELD, CALIFORNIA  
TRAVIS AFB (KSUU)