

FAIRFIELD, CALIFORNIA

RNAV (GPS) RWY 21L

WAAS CH 71274 W21A	APCH CRS 215°	Rwy Idg 10,995 TDZE 58 Arprt Elev 63
--	-------------------------	---

AL-488 [USAF]

TRAVIS AFB (KSUU)

T * When ALS inop increase all CAT RVR to 40, vis to $\frac{3}{4}$ mile.
 ** When ALS inop increase all CAT vis to $1\frac{1}{2}$ mile.
 *** When ALS inop, increase CAT AB RVR to 55, vis to 1 mile,
 CAT CDE vis to $1\frac{3}{4}$ miles.



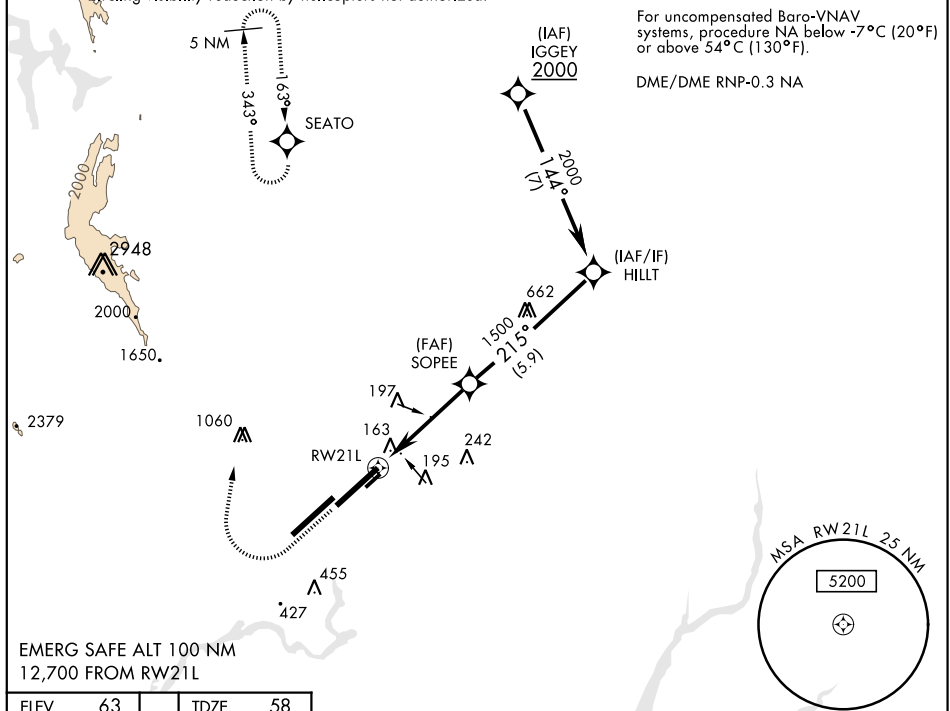
MISSED APPROACH: Climb to 2200 then climbing right turn to 4400 direct SEATO and hold, continue climb-in-hold to 4400.

ATIS	TRAVIS APP CON			TRAVIS TOWER		GND CON		CLNC DEL	
135.55 292.125	119.9(S)	126.6(N)	281.45	120.75	254.4	121.8	289.4	127.55	335.8

**** When Rwy 3R VGS1 inop, circling to Rwy 3R not authorized at night, Circling not authorized NW of Rwy 3L-21R, Circling visibility reduction by helicopters not authorized.

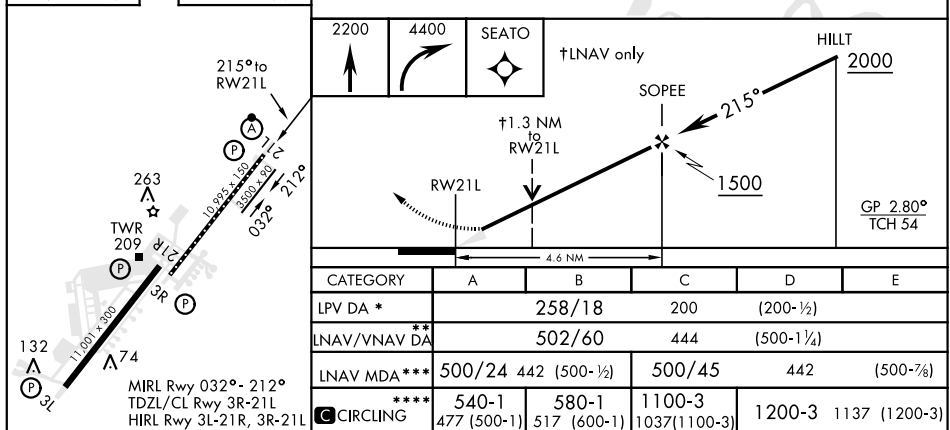
For uncompensated Baro-VNAV systems, procedure NA below -7°C (20°F) or above 54°C (130°F).

DME/DME RNP-0.3 NA



SW-2, 03 DEC 2020 to 31 DEC 2020

ELEV	63		TDZE	58
------	----	--	------	----



FAIRFIELD, CALIFORNIA

38° 16' N-121° 56' W

TRAVIS AFB (KSUU)

RNAV (GPS) RWY 21L

Amdt 3 06DEC18

SW-2, 03 DEC 2020 to 31 DEC 2020