

FAIRFIELD, CALIFORNIA

RNAV (GPS) RWY 21R

WAAS CH 71276 W21B	APCH CRS 215°	Rwy Idg 11,001 TDZE 51 Arpt Elev 63
--	-------------------------	--

AL-488 [USAF]

TRAVIS AFB (KSUU)

T * When Rwy 3R VGSi inop, circling to Rwy 3R not authorized at night. Circling not authorized NW of Rwy 3L-21R.

MISSED APPROACH: Climb to 2100 then climbing right turn to 4400 direct SEATO and hold, continue climb-in-hold to 4400.

ATIS
135.55 292.125

TRAVIS APP CON
119.9(S) 126.6(N) 281.45

TRAVIS TOWER
120.75 254.4

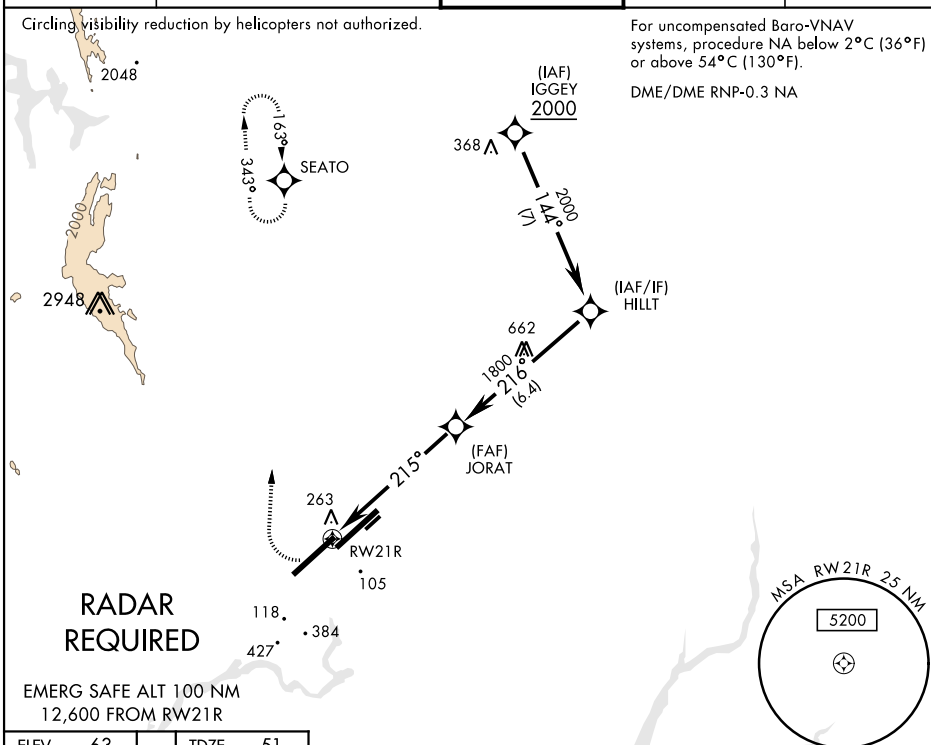
GND CON
121.8 289

CLNC DEL
127.55 335.8

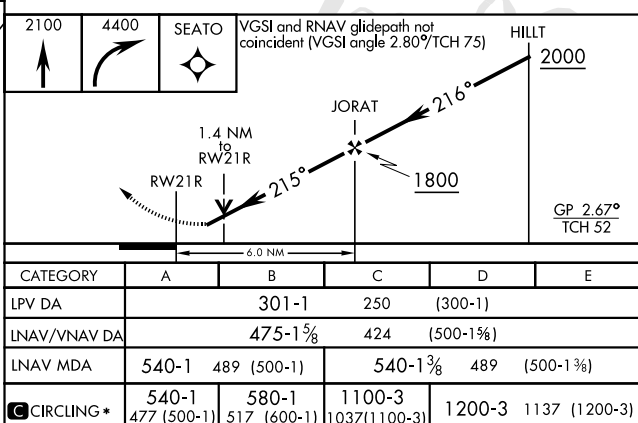
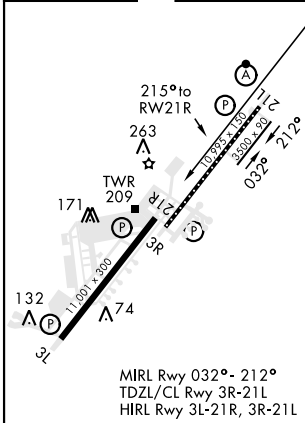
Circling visibility reduction by helicopters not authorized.

For uncompensated Baro-VNAV systems, procedure NA below 2°C (36°F) or above 54°C (130°F).

DME/DME RNP-0.3 NA



ELEV	63		TDZE	51
------	----	--	------	----



FAIRFIELD, CALIFORNIA

38°16'N-121°56'W

TRAVIS AFB (KSUU)

Amdt 3 06DEC18

RNAV (GPS) RWY 21R

SW-2, 03 DEC 2020 to 31 DEC 2020

SW-2, 03 DEC 2020 to 31 DEC 2020