

RNAV (GPS) RWY 3L

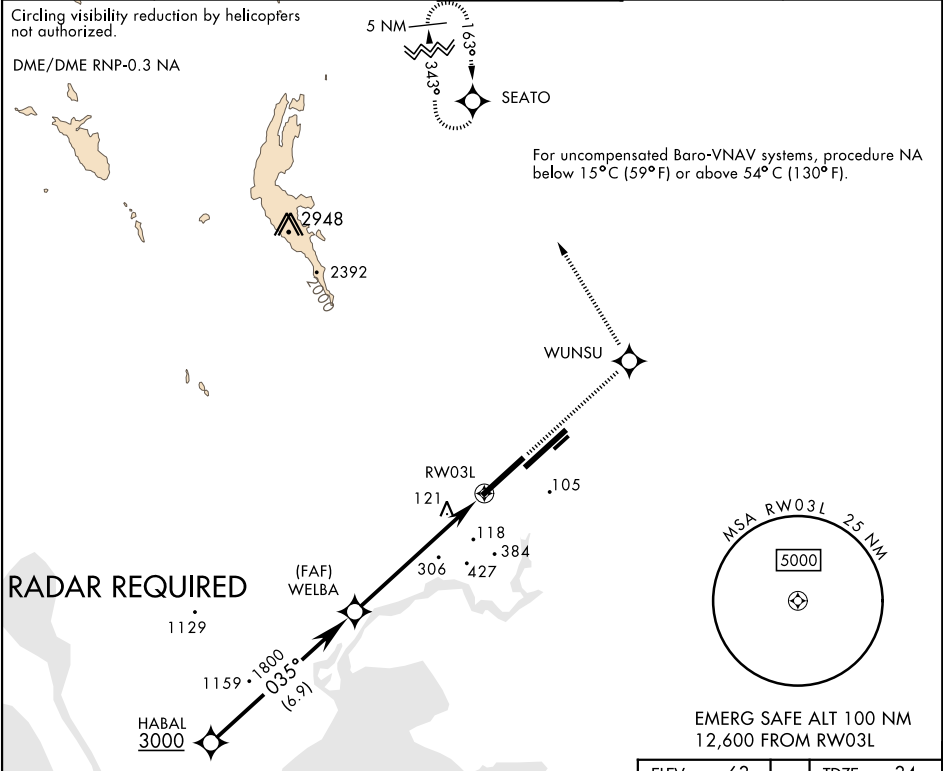
WAAS CH 71275 W03A	APCH CRS 035°	Rwy Idg 11,001 TDZE 34 Arpt Elev 63
--	-------------------------	--

AL-488 [USAF]

TRAVIS AFB (KSUU)

⚠ * When Rwy 3R VGSi inop, circling to Rwy 3R not authorized at night. Circling not authorized NW of Rwy 3L-21R.	MISSED APPROACH: Climb to 4400 direct WUNSU, track 316° to SEATO and hold, continue climb-in-hold to 4400.
---	--

ATIS 135.55 292.125	TRAVIS APP CON 119.9 (S) 126.6 (N) 281.45	TRAVIS TOWER 120.75 254.4	GND CON 121.8 289.4	CLNC DEL 127.55 335.8
-------------------------------	---	-------------------------------------	-------------------------------	---------------------------------



HABAL		† LNAV only		4400	WUNSU	tr 316°
3000	035°		WELBA	† 1.8 NM to RW03L		RW03L
GP 2.50° TCH 56	1800		6.4 NM			
CATEGORY	A	B	C	D	E	
LPV DA	234/40		200	(200-¾)		
LNAV/ VNAV DA	522-2		488	(500-2)		
LNAV MDA	600/55	566 (600-1)	600-1½		566	(600-1½)
CIRCLING*	600-1	537 (600-1)	1100-3 1037(1100-3)	1200-3	1137	(1200-3)

ELEV 63

TDZE 34

RNAV (GPS) RWY 3L

SW-2, 03 DEC 2020 to 31 DEC 2020

SW-2, 03 DEC 2020 to 31 DEC 2020