

WAPEX-ONE DEPARTURE (WAPEX 1 • WAPEX)

SHL-488 [USAF]

FAIRFIELD, CALIFORNIA

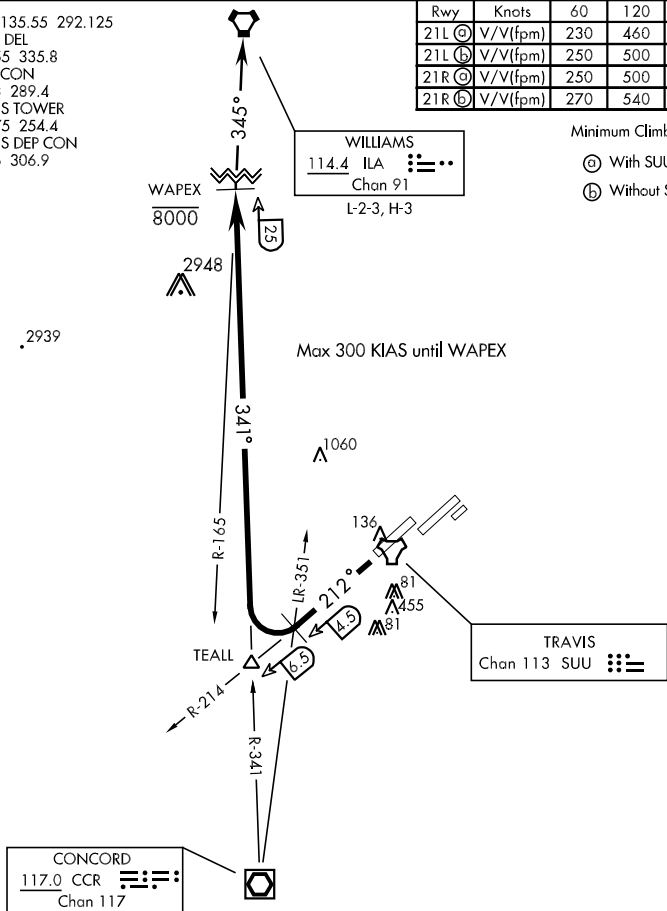
ATIS 135.55 292.125
CLNC DEL
127.55 335.8
GND CON
121.8 289.4
TRAVIS TOWER
120.75 254.4
TRAVIS DEP CON
126.6 306.9

| Rwy | Knots | 60 | 120 | 180 | 240 | 300 | 360 |
|---------|----------|-----|-----|-----|------|------|------|
| 21L (a) | V/V(fpm) | 230 | 460 | 690 | 920 | 1150 | 1380 |
| 21L (b) | V/V(fpm) | 250 | 500 | 750 | 1000 | 1250 | 1500 |
| 21R (a) | V/V(fpm) | 250 | 500 | 750 | 1000 | 1250 | 1500 |
| 21R (b) | V/V(fpm) | 270 | 540 | 810 | 1080 | 1350 | 1620 |

Minimum Climb Rate to 4100

Ⓐ With SUU TACAN

(b) Without SUU TACAN



DEPARTURE ROUTE DESCRIPTION

TAKE-OFF RWY 21 L/R:

With SUU TACAN: Climb via heading 212° to intercept SUU R-214, turn right intercept CCR VOR/DME R-341 to WAPEX, then via assigned transition or filed flight plan.

Without SUU TACAN: Climb via heading 212°, turn right intercept CCR VOR/DME R-341 to WAPEX, then via assigned transition or filed flight plan.

WILLIAMS TRANSITION (WAPEX 1 • ILA): Turn right intercept ILA VORTAC R-165 to ILA.

WAPEX-ONE DEPARTURE (WAPEX 1 • WAPEX)

FAIRFIELD, CALIFORNIA

TRAVIS AFB (KSUU)