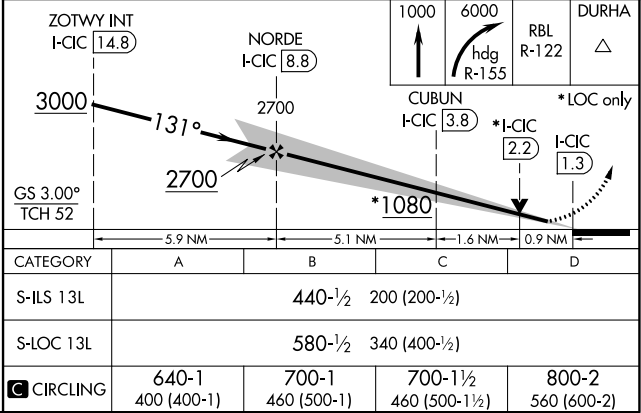
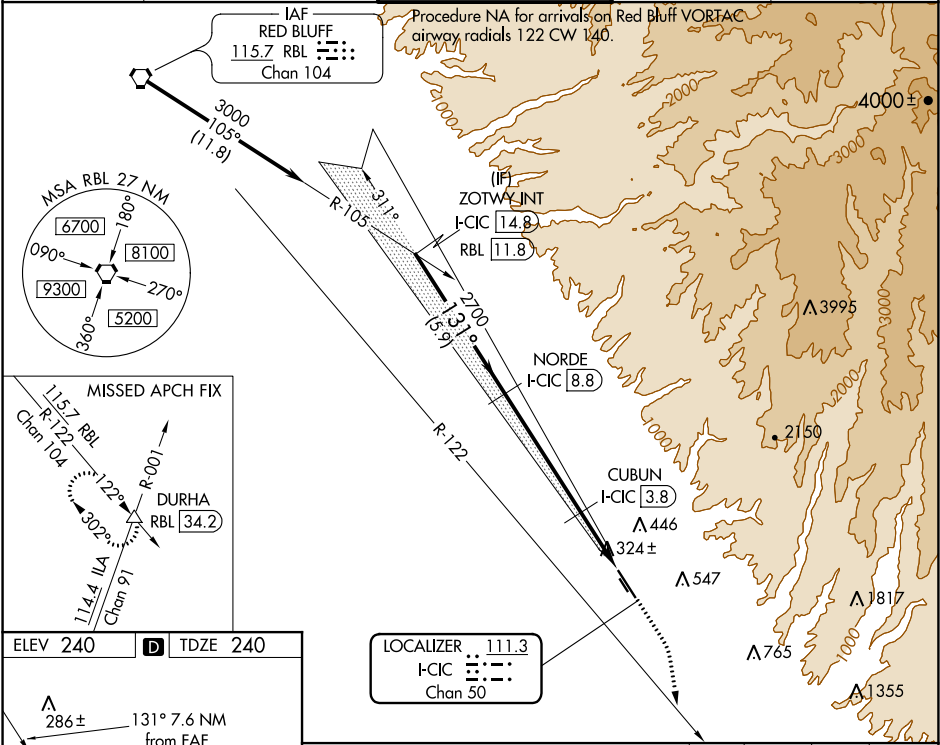


LOC/DME I-CIC <b>111.3</b> Chan <b>50</b>	APP CRS <b>131°</b>	Rwy Idg TDZE <b>240</b> Apt Elev <b>240</b>
---	------------------------	---

ILS or LOC RWY 13L  
CHICO MUNI (CIC)

DME required.	MALSR	MISSED APPROACH: Climb to 1000 then climbing right turn to 6000 on heading 155° and RBL R-122 to DURHA INT/ RBL 34.2 DME and hold, continue climb-in-hold to 6000.
Circling NA east of Rwy 13L/31R.		

ATIS <b>119.675</b>	OAKLAND CENTER <b>132.2 350.3</b>	CHICO TOWER ★ <b>121.0</b> (CTAF) <b>239.3</b>	GND CON <b>121.9</b>	UNICOM <b>122.95</b>
------------------------	--------------------------------------	---	-------------------------	-------------------------



SW-2, 03 DEC 2020 to 31 DEC 2020

SW-2, 03 DEC 2020 to 31 DEC 2020