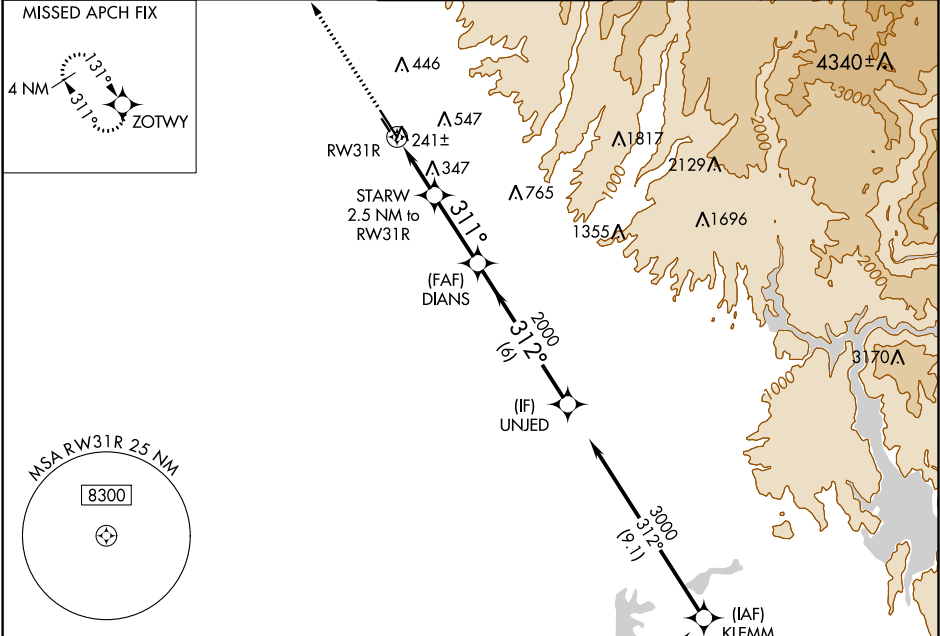


WAAS CH <b>77912</b> <b>W31A</b>	APP CRS <b>311°</b>	Rwy Idg TDZE <b>226</b> Apt Elev <b>240</b>
--	------------------------	---

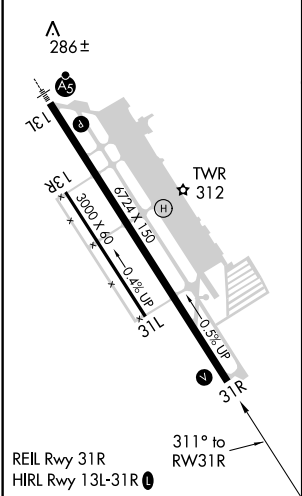
RNAV (GPS) RWY 31R  
CHICO MUNI (CIC)

RNP APCH. ▼ For uncompensated Baro-VNAV systems, LNAV/VNAV NA below -15°C or above 48°C.	MISSED APPROACH: Climb to 3000 direct ZOTWY and hold.
---	---

ATIS <b>119.675</b>	OAKLAND CENTER <b>132.2 350.3</b>	CHICO TOWER ★ <b>121.0 (CTAF) 239.3</b>	GND CON <b>121.9</b>	UNICOM <b>122.95</b>
------------------------	--------------------------------------	--	-------------------------	-------------------------



ELEV <b>240</b>	<b>D</b>	TDZE <b>226</b>
-----------------	----------	-----------------



Procedure NA for arrivals at GRIDD on V23 and T261 southeast bound.

3000 ↑ ZOTWY	VGSi and RNAV glidepath not coincident (VGSi Angle 3.00/TCH 54).				UNJED
* LNAV only	STARW 2.5 NM to RW31R	DIANS	2000	312°	3000
	* 1.1 NM to RW31R		2000	311°	
	1060*				
	1.1 NM	1.4 NM	2.9 NM	6 NM	
CATEGORY	A	B	C	D	
LPV DA	476-1 250 (300-1)				
LNAV/VNAV DA	733-1¾ 507 (500-1¾)				
LNAV MDA	600-1 374 (400-1)				600-1¼ 374 (400-1¼)