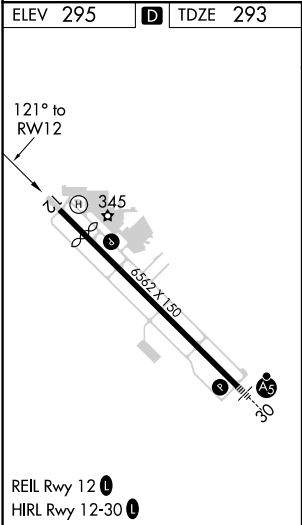
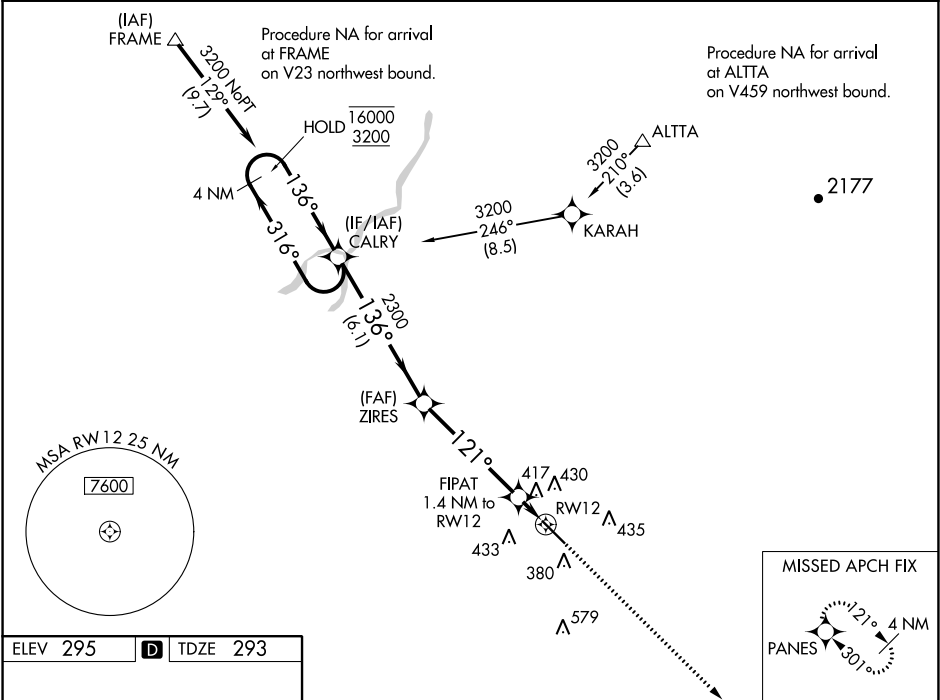


WAAS CH <b>82423</b> <b>W12A</b>	APP CRS <b>121°</b>	Rwy Idg TDZE Apt Elev	<b>5635</b> <b>293</b> <b>295</b>
--	------------------------	-----------------------------	---

RNAV (GPS) RWY 12

VISALIA MUNI (VIS)

RNP APCH.		MISSED APPROACH: Climb to 2900 direct PANES and hold.	
▼ For uncompensated Baro-VNAV systems, LNAV/VNAV NA below -15°C or above 54°C.			
AWOS-3PT <b>119.925</b>	FRESNO APP CON <b>118.5</b>	CLNC DEL <b>118.5</b>	UNICOM <b>123.05 (CTAF) 0</b>



VGSI and RNAV glidepath not coincident (VGSI Angle 3.00/TCH 40).				2900	PANES
4 NM Holding Pattern CALRY					
16000 3200				2300	FIPAT 1.4 NM to RWY 12
GP 3.00° TCH 50				2300	RWY 12
				6.1 NM	4.8 NM
CATEGORY	A	B	C	D	
LPV DA	543-3/4 250 (300-3/4)				
LNAV/VNAV DA	697-1 404 (500-1 1/8)				
LNAV MDA	680-1 387 (400-1)		680-1 387 (400-1 1/8)		
CIRCLING	720-1 425 (500-1)	760-1 465 (500-1)	760-1 1/2 465 (500-1 1/2)	940-2 645 (700-2)	