

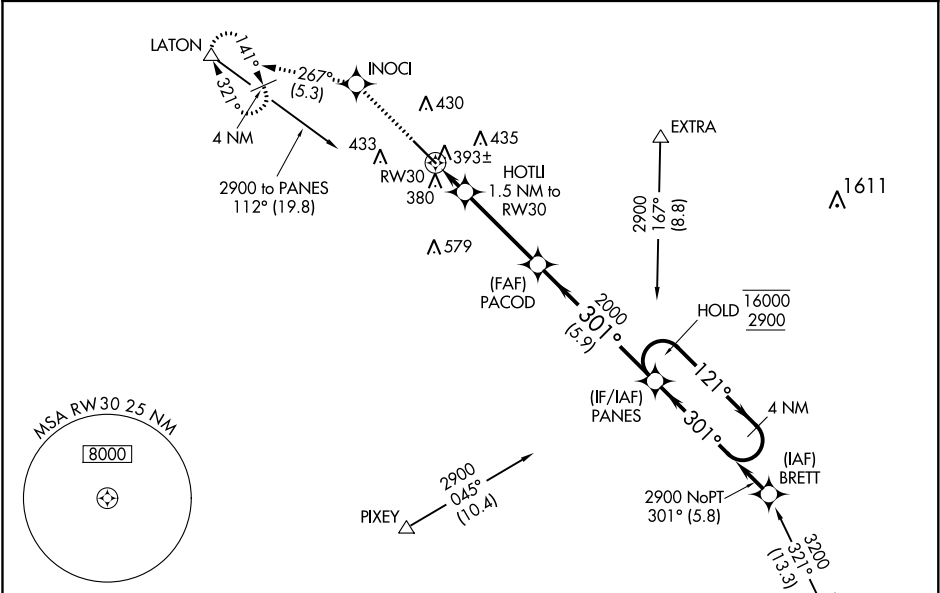
WAAS CH <b>77623</b> <b>W30A</b>	APP CRS <b>301°</b>	Rwy Idg TDZE Apt Elev	<b>5635</b> <b>295</b> <b>295</b>
--	------------------------	-----------------------------	---

RNAV (GPS) RWY 30

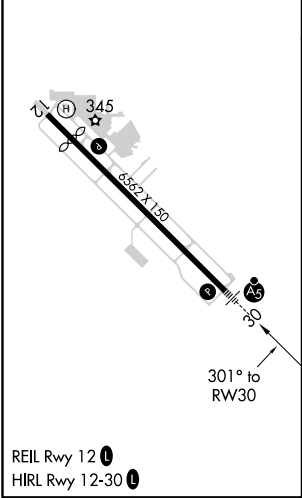
VISALIA MUNI (VIS)

RNP APCH.	MALSR	MISSED APPROACH: Climb to 3000 direct INOC1 and on track 267° to LATON and hold, continue climb-in-hold to 3000.
For uncompensated Baro-VNAV systems, LNAV/VNAV NA below -15°C or above 54°C. For inop ALS, increase LNAV/VNAV all Cats visibility to ¾ SM, LNAV Cats C/D to 1 SM.		

AWOS-3PT <b>119.925</b>	FRESNO APP CON <b>118.5</b>	CLNC DEL <b>118.5</b>	UNICOM <b>123.05</b> (CTAF)
----------------------------	--------------------------------	--------------------------	--------------------------------



ELEV 295	<b>D</b>	TDZE 295
----------	----------	----------



3000	INOC1	LATON	PANES	4 NM Holding Pattern
↑		tr 267°		
*LNAV only.				
HOTU 1.5 NM to RW30				
*1 NM to RW30				
RW30				
820*				
1 NM 0.5 NM 3.7 NM 5.9 NM				
CATEGORY	A	B	C	D
LPV DA	502-½ 207 (300-½)			
LNAV/VNAV DA	554-½ 259 (300-½)			
LNAV MDA	660-½ 365 (400-½)		660-⅝ 365 (400-⅝)	
CIRCLING	720-1 425 (500-1)	760-1 465 (500-1)	760-1½ 465 (500-1½)	940-2 645 (700-2)