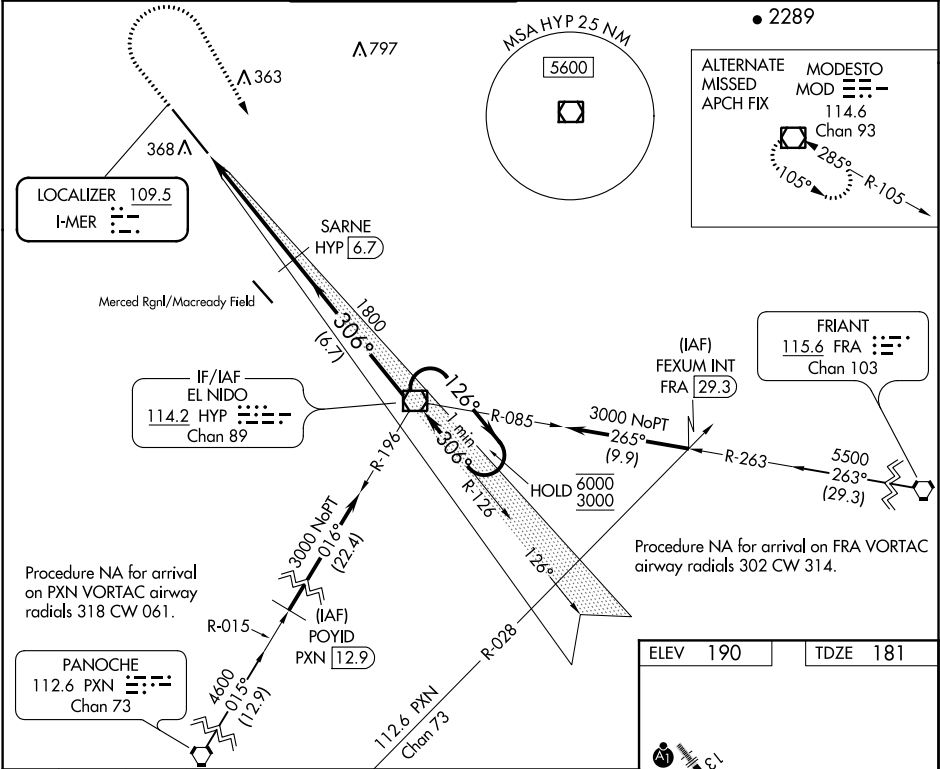



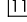
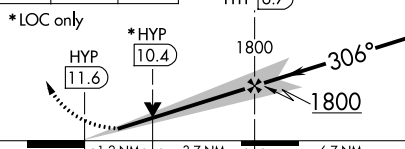

LOC I-MER <b>109.5</b>	APP CRS <b>306°</b>	Rwy Idg <b>11802</b> TDZE <b>181</b> Apt Elev <b>190</b>
---------------------------	------------------------	----------------------------------------------------------------

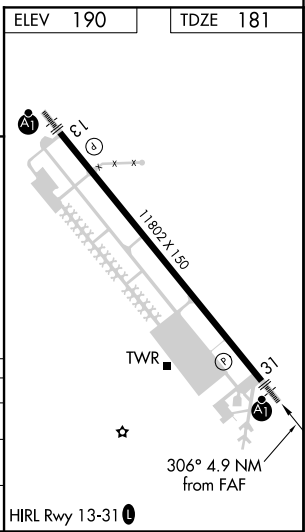
ILS or LOC RWY 31  
CASTLE (MER)

DME required for LOC only.	ALSF-1 	MISSED APPROACH: Climb to 1000 then climbing right turn to 3000 direct HYP VOR/DME and hold.
Circling NA southwest of Rwy 13-31. DME from HYP VOR/DME.		
Simultaneous reception of I-MER and HYP DME required.		

ATIS <b>124.475</b>	NORCAL APP CON <b>120.95 269.45</b>	CASTLE TOWER ★ <b>118.175 (CTAF) 235.775</b>	GND CON <b>133.575</b>	UNICOM <b>122.95</b>	<b>123.0 0</b>
------------------------	----------------------------------------	-------------------------------------------------	---------------------------	-------------------------	----------------



1000 ↑	3000 ↷	HYP 	VGSI and ILS glidepath not coincident (VGSI Angle 3.00/TCH 71).		HYP VOR/DME	One Minute Holding Pattern	
*LOC only			SARNE HYP 6.7				
*HYP 11.6 			1800 306° 1800		126° → 6000 ← 306° 3000		GS 3.00° TCH 55
							
CATEGORY	A		B		C		D
S-ILS 31	381-½ 200 (200-½)						
S-LOC 31	620-½ 439 (500-½)		620-¾ 439 (500-¾)				
 CIRCLING	660-1 470 (500-1)		720-1½ 530 (600-1½)		800-2 610 (700-2)		



SW-2, 03 DEC 2020 to 31 DEC 2020

SW-2, 03 DEC 2020 to 31 DEC 2020