


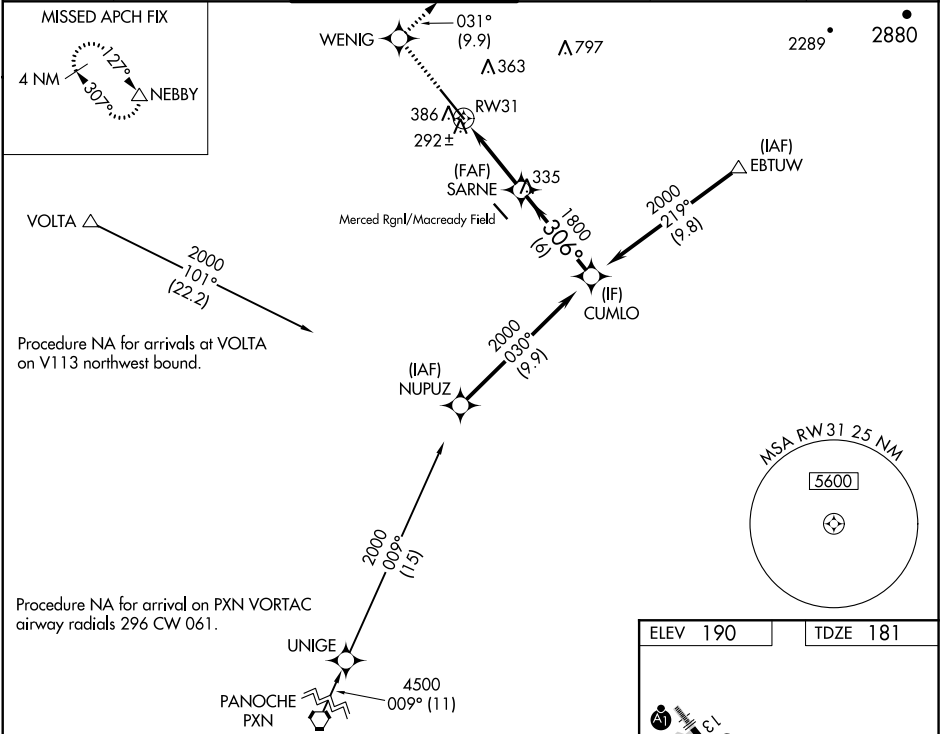
WAAS CH <b>87110</b> <b>W31A</b>	APP CRS <b>306°</b>	Rwy ldg <b>11802</b> TDZE <b>181</b> Apt Elev <b>190</b>
--	------------------------	--

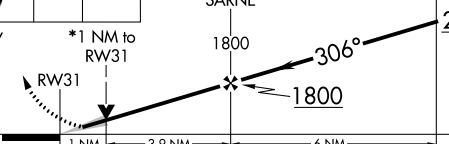
RNAV (GPS) RWY 31

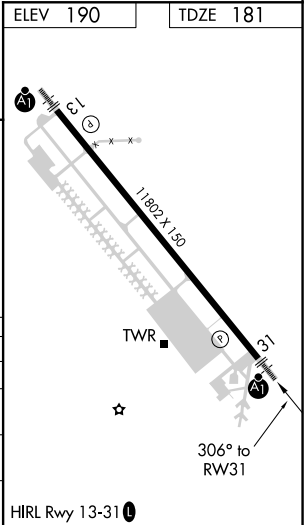
CASTLE (MER)

RNP APCH. ▼ Circling NA southwest of Rwy 13-31. For uncompensated Baro-VNAV systems, LNAV/VNAV NA below -15°C or above 54°C. For inoperative ALS, increase LNAV/VNAV all Cnts visibility to ½ SM and LNAV Cnts C/D visibility to 1 SM.	ALSF-1 	MISSED APPROACH: Climb to 4000 direct WENIG and on track 031° to NEBBY and hold, continue climb-in-hold to 4000.
---	---	--

ATIS <b>124.475</b>	NORCAL APP CON <b>120.95 269.45</b>	CASTLE TOWER ★ <b>118.175</b> (CTAF) <b>235.775</b>	GND CON <b>133.575</b>	UNICOM <b>122.95</b>	<b>123.00</b>
------------------------	--	--	---------------------------	-------------------------	---------------



4000	WENIG	NEBBY	VGSi and RNAV glidepath not coincident (VGSi Angle 3.00/TCH 71).		CUMLO
↑	✦	tr 031°	△		
*LNAV only		*1 NM to RW31			
					
CATEGORY		A	B	C	D
LPV DA		381-½ 200 (200-½)			
LNAV/ VNAV DA		498-½ 317 (400-½)			
LNAV MDA		560-½ 379 (400-½)		560-⅝ 379 (400-⅝)	
CIRCLING		660-1 470 (500-1)		720-1½ 530 (600-1½)	800-2 610 (700-2)



SW-2, 03 DEC 2020 to 31 DEC 2020

SW-2, 03 DEC 2020 to 31 DEC 2020