

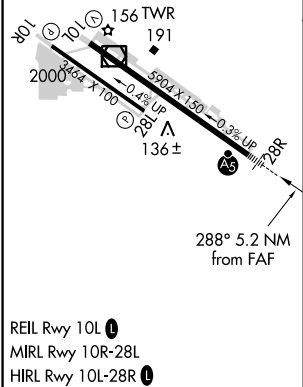
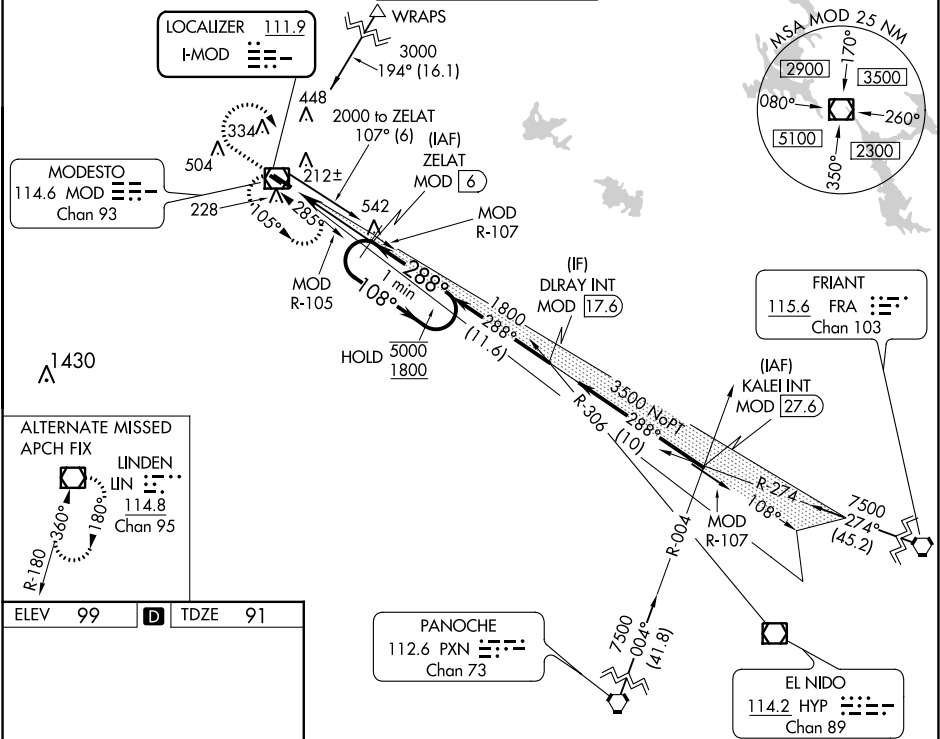
LOC I-MOD 111.9	APP CRS 288°	Rwy Idg TDZE Apt Elev	5904 91 99
---------------------------	------------------------	-----------------------------	---------------------------------------

ILS or LOC RWY 28R

MODESTO CITY-COUNTY-HARRY SHAM FIELD (MOD)

DME required for LOC only.		MALSR	MISSED APPROACH: Climb to 1500 then climbing right turn to 2000 direct MOD VOR/DME and hold.
Autopilot coupled approach NA below 1080. DME from MOD VOR/DME. Simultaneous reception of I-MOD and MOD DME required. For inop ALS, increase S-LOC 28R Cat C/D visibility to 1½ SM.			

ATIS 127.7	NORCAL APP CON 120.95 269.45	MODESTO TOWER* 125.3 (CTAF) 257.8	GND CON 121.7	UNICOM 122.95
----------------------	--	---	-------------------------	-------------------------



ELEV 99 D TDZE 91		PANOCHÉ 112.6 PXN Chan 73		EL NIDO 114.2 HYP Chan 89	
1500 2000 MOD		ZELAT MOD 6		One Minute Holding Pattern	
*LOC only		MOD 0.8 *MOD 2.2		108° 5000 1800 288° 1800	
1.4 NM 3.8 NM		GS 3.00° TCH 53			
CATEGORY	A	B	C	D	
S-ILS 28R	291-½		200 (200-½)		
S-LOC 28R	580-½ 489 (500-½)		580-1 489 (500-1)		
CIRCLING	580-1 481 (500-1)		600-1 501 (600-1)		
	700-1¾ 601 (700-1¾)		820-2¼ 721 (800-2¼)		

SW-2, 03 DEC 2020 to 31 DEC 2020

SW-2, 03 DEC 2020 to 31 DEC 2020