

WAAS  
CH **70609**  
**W28A**

APP CRS  
**288°**

Rwy Idg  
TDZE **91**

Apt Elev  
**99**

MODESTO CITY-COUNTY-HARRY SHAM FIELD (MOD)

**RNAV (GPS) RWY 28R**

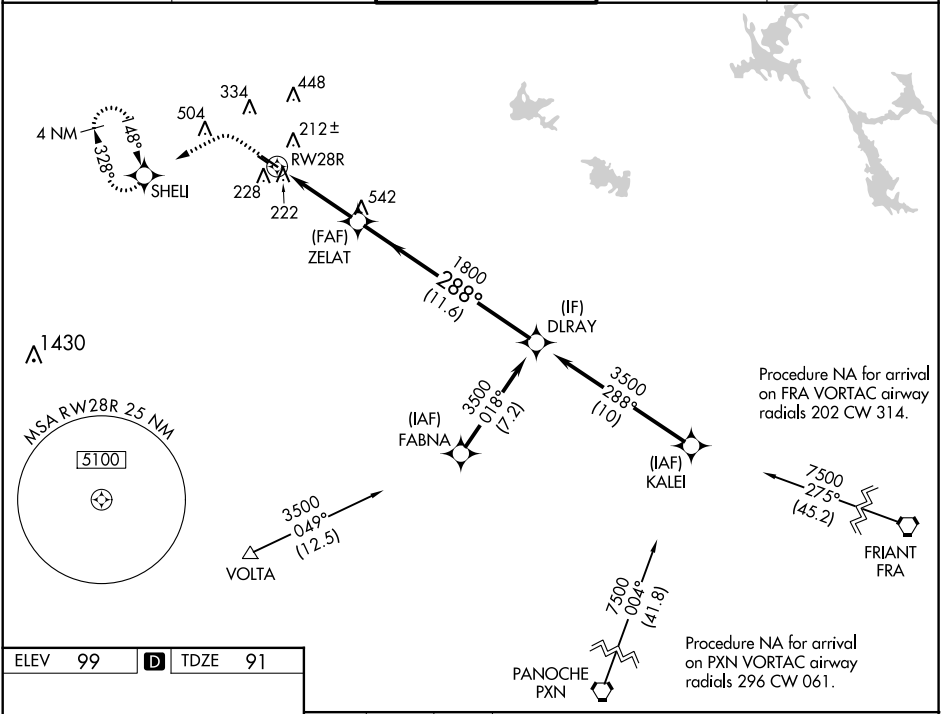
RNP APCH.  

For uncompensated Baro-VNAV systems, LNAV/VNAV NA below -1°C or above 54°C. For inoperative ALS, increase LNAV/VNAV all Cats visibility to 700 SM.

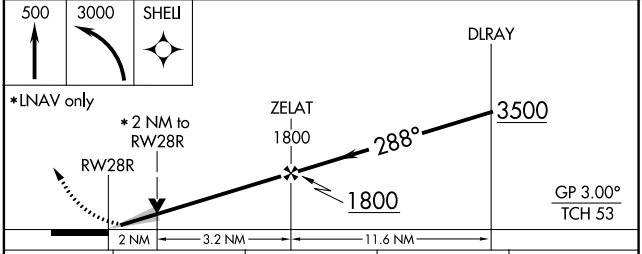
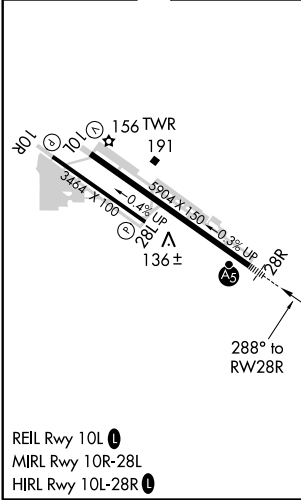
MALSR

MISSED APPROACH: Climb to 500 then climbing left turn to 3000 direct SHELL and hold, continue climb-in-hold to 3000.

ATIS <b>127.7</b>	NORCAL APP CON <b>120.95 269.45</b>	MODESTO TOWER * <b>125.3 (CTAF) 0 257.8</b>	GND CON <b>121.7</b>	UNICOM <b>122.95</b>
----------------------	--	--	-------------------------	-------------------------



ELEV 99	D	TDZE 91
---------	---	---------



CATEGORY	A	B	C	D
LPV DA	291-1/2 200 (200-1/2)			
LNAV/VNAV DA	393-1/2 302 (300-1/2)			
LNAV MDA	480-1/2 389 (400-1/2)		480-5/8 389 (400-5/8)	
CIRCLING	540-1 441 (500-1)	600-1 501 (600-1)	700-13/4 601 (700-13/4)	820-21/4 721 (800-21/4)