

LOC I-MYV 110.5	APP CRS 141°	Rwy Idg 6007 TDZE 64 Apt Elev 64
---------------------------	------------------------	---

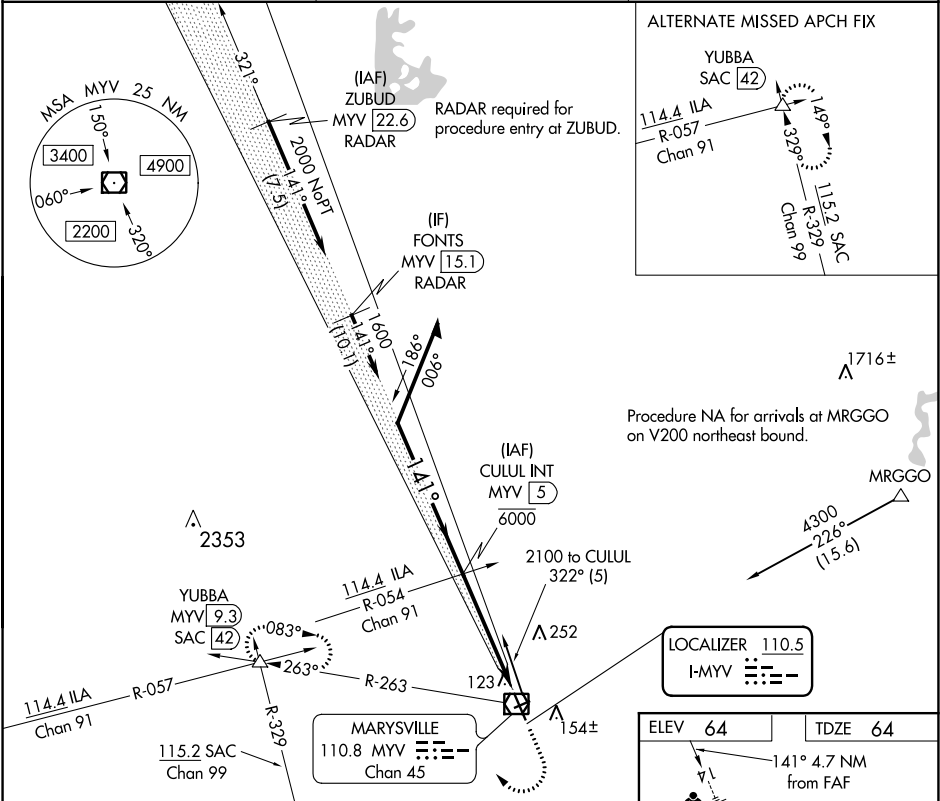
ILS or LOC RWY 14
YUBA COUNTY (MYV)

NA Circling Rwy 5, 23 NA at night.
Autopilot coupled approach NA below 695.

MALSR

MISSED APPROACH: Climb to 1000 then climbing right turn to 4000 on MYV VOR/DME R-263 to YUBBA INT/ MYV 9.3 DME and hold, continue climb in hold to 4000.

ASOS 118.475	NORCAL APP CON 125.4 259.1	UNICOM 123.05 (CTAF) 0
------------------------	--------------------------------------	----------------------------------



GS 3.00° TCH 51	Remain within 10 NM		CULUL INT MYV (5)		1000 ↑	4000 MYV R-263	YUBBA △
	321°		141°		*MYV 1.7		*LOC only
	2100		1600				
		3.4 NM		1.3 NM			
CATEGORY	A		B		C		D
S-ILS 14			264-1/2		200 (200-1/2)		
S-LOC 14	520-1/2		456 (500-1/2)		520-7/8		456 (500-7/8)
CIRCLING	540-1		476 (500-1)		560-1 1/2 496 (500-1 1/2)		620-2 556 (600-2)

