

WAAS CH 42814 W14A	APP CRS 141°	Rwy Idg 6007 TDZE 64 Apt Elev 64
--	------------------------	---

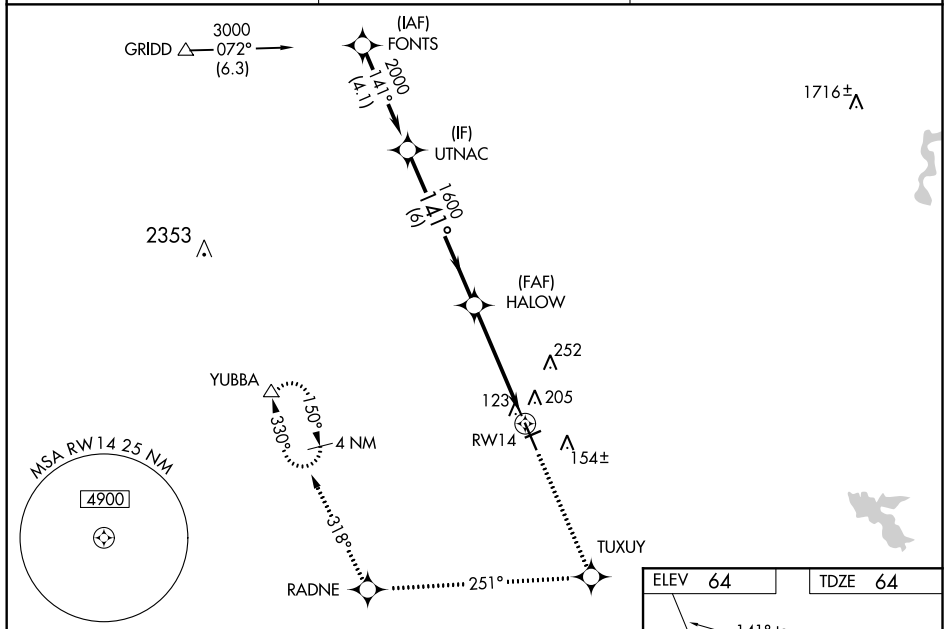
RNAV (GPS) RWY 14
YUBA COUNTY (MYV)

T For uncompensated Baro-VNAV systems, LNAV/VNAV NA below -15°C (5°F) or above 54°C (130°F). DME/DME RNP-0.3 NA. Helicopter visibility reduction below ¾ SM NA. Baro-VNAV and VDP NA when using Lincoln altimeter setting. When local altimeter setting not received, use Lincoln altimeter setting and increase LPV DA to 308 feet, LNAV/VNAV DA to 514 feet and all MDA 60 feet; increase LNAV/VNAV all Cats visibility ½ mile, LNAV Cats C/D visibility ½ mile. Inop table does not apply to LPV all Cats. For inop MALSR increase LNAV Cats A/B visibility ¼ mile. Night landing: Rwy 5, 23 NA.

MALSR

MISSED APPROACH:
Climb to 4000 direct
TUXUY and via track
251° to RADNE and
via track 318° to
YUBBA and hold.

ASOS 118.475	NORCAL APP CON 125.4 259.1	UNICOM 123.05 (CTAF) 0
------------------------	--------------------------------------	----------------------------------



UTNAC		4000 ↑	TUXUY ✧	tr 251°	RADNE ✧	tr 318°	YUBBA △
2000		HALOW				* LNAV only.	
Procedure Turn NA		141°		* 1.1 NM to RW14		RW14	
GP 3.00°		1600					
TCH 51		6 NM		3.5 NM		1.1 NM	
CATEGORY		A	B		C	D	
LPV DA		264-¾ 200 (200-¾)					
LNAV/ VNAV DA		470-⅞ 406 (500-⅞)					
LNAV MDA		500-¾ 436 (500-¾)					
CIRCLING		540-1 476 (500-1)			540-1½ 476 (500-1½)		620-2 556 (600-2)

