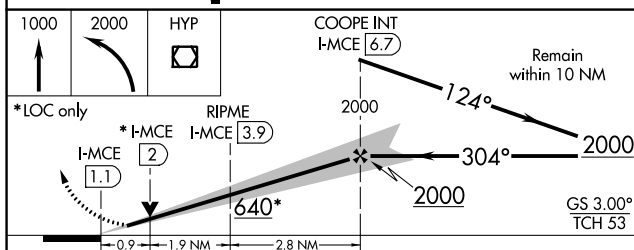
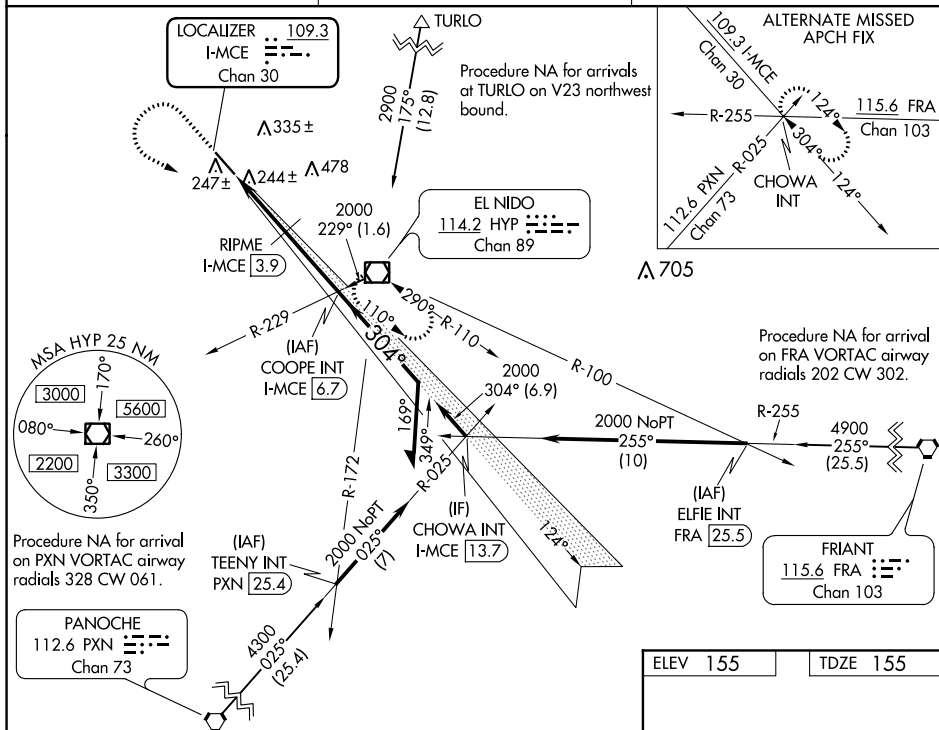



ILS or LOC RWY 30  
MERCED RGNL/MACREADY FIELD (MCE)

**MISSED APPROACH:** Climb to 1000 then climbing left turn to 2000 direct HYP VOR/DME and hold.

UNICOM  
122.7 (CTAF) 

CATEGORY	A	B	C	D
S-ILS 30	355-½ 200 (200-½)			
S-LOC 30	640-¾ 485 (500-¾)		640-1 485 (500-1)	
RIPME FIX MINIMUMS				
S-LOC 30	500-¾ 345 (400-¾)			

