

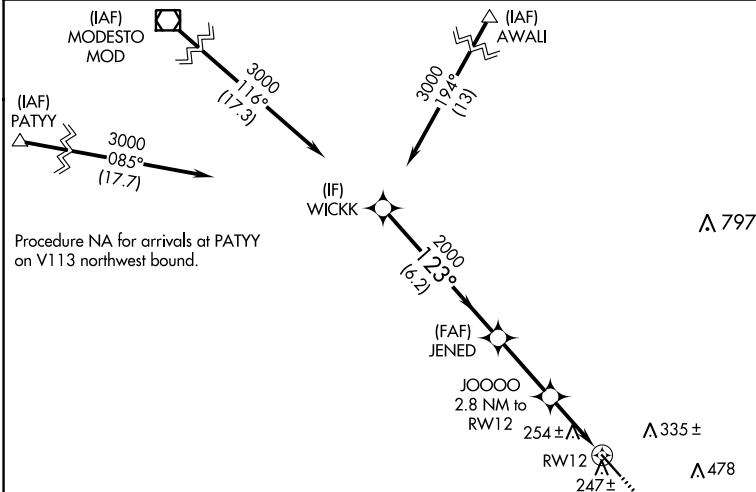

# RNAV (GPS) RWY 12

## MERCED RGNL/MACREADY FIELD (MCE)

**T** Rwy 12 helicopter visibility reduction below  $\frac{3}{4}$  SM NA. For uncompensated Baro-VNAV systems, LNAV/VNAV NA below -3°C or above 54°C.

**MISSED APPROACH:** Climb to 3600  
direct CHOWA and hold.

NORCAL APP CON  
**120.95 269.45**

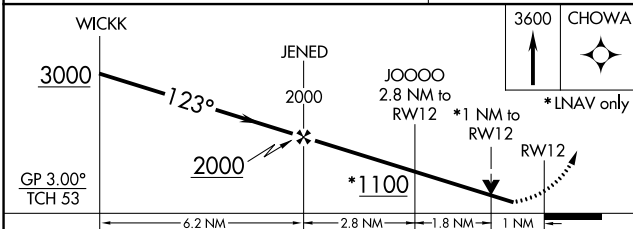
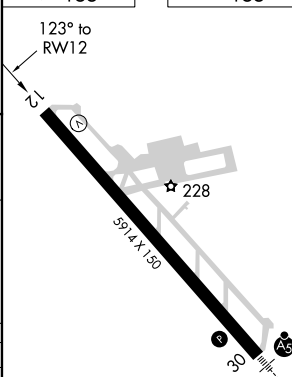
UNICOM  
122.7 (CTAF) 

A circular scale for the MSA RW12 25 NM. The scale has a reading of 5600. The scale is marked with 'MSA RW12 25 NM' around the top edge. The number '5600' is displayed in a rectangular box in the center of the scale. Below the box is a small circular symbol with four dots inside.

## MISSED APCH FIX



ELEV	155		TDZE	155
------	-----	--	------	-----



CATEGORY	A	B	C	D
LPV DA		405- <sup>3</sup> / <sub>4</sub>	250 (300- <sup>3</sup> / <sub>4</sub> )	
LNAV/ VNAV DA		434- <sup>7</sup> / <sub>8</sub>	279 (300- <sup>7</sup> / <sub>8</sub> )	
LNAV MDA		520-1	365 (400-1)	

REIL Rwy 12 **L**  
HIRL Rwy 12-30 **L**