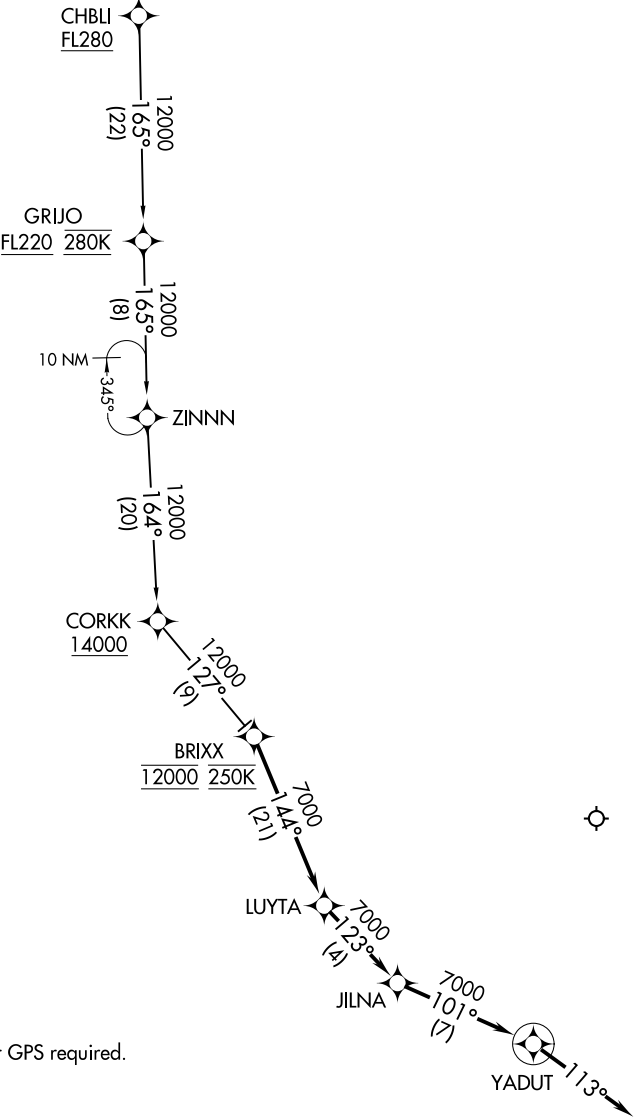


BRIXX TWO ARRIVAL (RNAV)

AL-693 (FAA)

NORMAN Y MINETA SAN JOSE INTL (SJC)
SAN JOSE, CALIFORNIA

OAKLAND CENTER
125.85 323.0
NORCAL APP CON
133.95 317.6
D-ATIS
126.95
SAN JOSE TOWER ★
124.0 257.6
GND CON
121.7



NOTE: RADAR required.
NOTE: RNAV 1.
NOTE: DME/DME/IRU or GPS required.

NOTE: Chart not to scale.

ARRIVAL ROUTE DESCRIPTION

CHBLI TRANSITION (CHBLI.BRXX2)

From BRIXX on track 144° to LUYTA, then on track 123° to JILNA, then on track 101° to YADUT, then on track 113°. Expect RADAR vectors to final approach course.

BRIXX TWO ARRIVAL (RNAV)