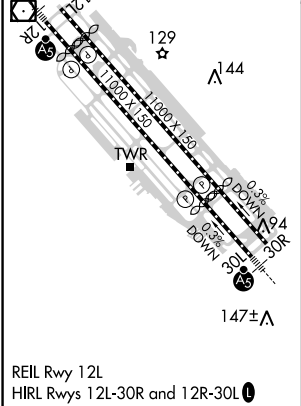
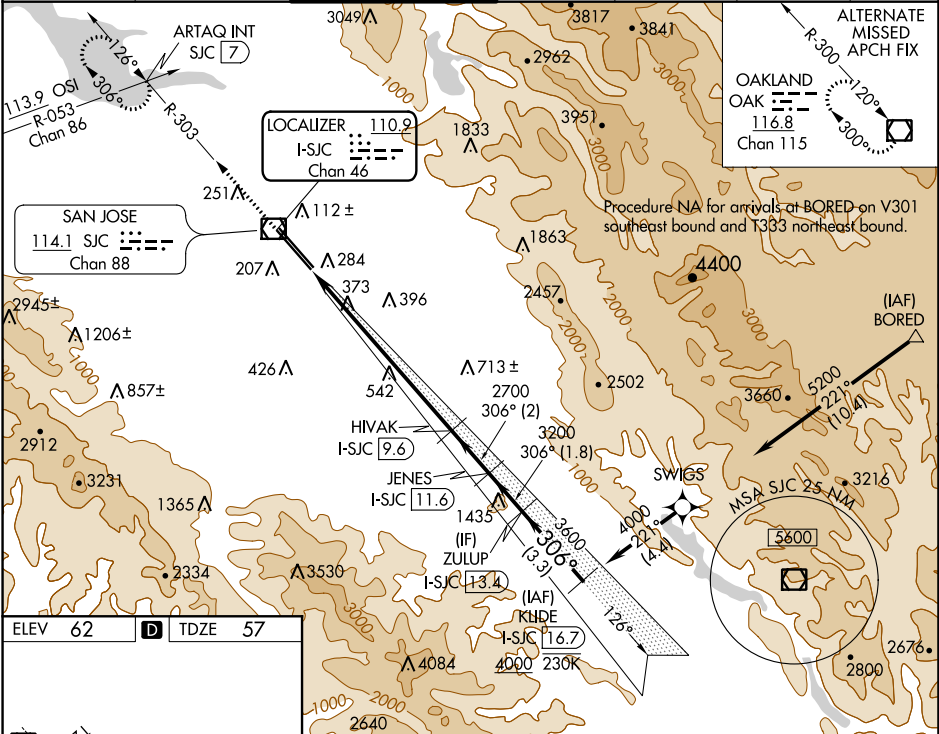


LOC/DME I-SJC	APP CRS	Rwy Idg	7614
110.9	306°	TDZE	57
Chan 46		Apt Elev	62

ILS RWY 30L (SA CAT I & II)
NORMAN Y MINETA SAN JOSE INTL (SJC)

RNAV 1-GPS or RADAR required for procedure entry. DME required. From BORED: RNAV 1-GPS required.				MALSR	MISSED APPROACH: Climb to 1900 on SJC VOR/DME R-303 to ARTAQ INT/SJC 7 DME and hold.	
SA CAT I: Requires specific OPSPEC, MSPEC, or LOA approval and use of HUD to DH. SA CAT II: Reduced lighting: requires specific OPSPEC, MSPEC, or LOA approval and use of autoland or HUD to touchdown. SA CAT I/II: Procedure NA when tower closed.						
D-ATIS	NORCAL APP CON	SAN JOSE TOWER*	GND CON	CLNC DEL	CPDLC	UNICOM
126.95	120.1 290.25	124.0 (CTAF) 0 257.6	121.7	118.0		122.95



1900 ↑ SJC R-303		ARTAQ INT		VGSI and ILS glidepath not coincident (VGSI Angle 3.00/TCH 70).				ZULUP I-SJC 13.4		KLUDE I-SJC 16.7	
				HIVAK I-SJC 9.6		JENES I-SJC 11.6					
				2700		3200		3600		4000	
				2700						GS 3.00° TCH 54	
1109°		8.1 NM		2 NM		1.8 NM		3.3 NM			
CATEGORY		A		B		C		D			
S-ILS 30L		SA CAT I		RA 147/14		150 DA 207					
S-ILS 30L		SA CAT II		RA 97/12		100 DA 157					
SA CATEGORY I & II ILS - SPECIAL AIRCREW AND AIRCRAFT CERTIFICATION REQUIRED											