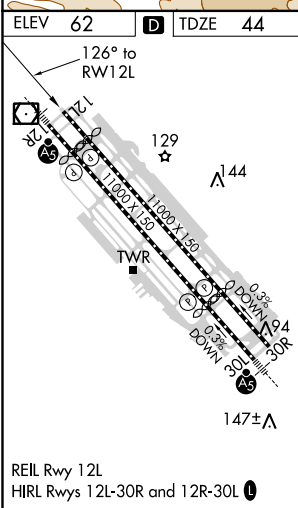
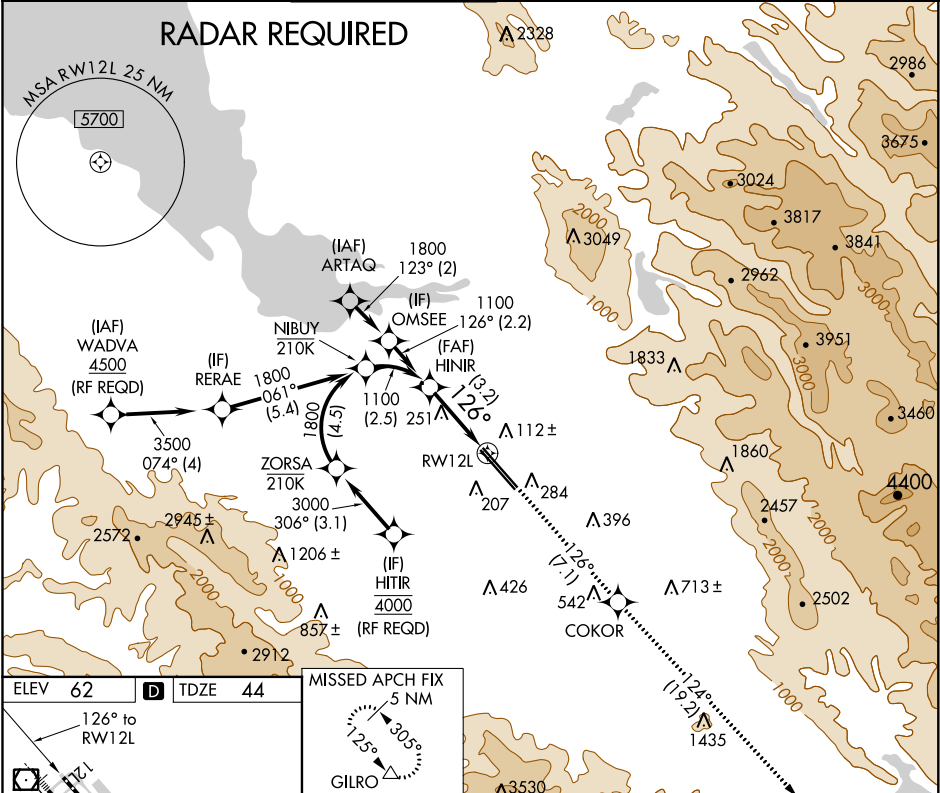


APP CRS	Rwy Idg	8833
126°	TDZE	44
	Apt Elev	62

RNAV (RNP) Z RWY 12L
NORMAN Y MINETA SAN JOSE INTL (SJC)

For uncompensated Baro-VNAV systems, procedure NA below 0°C (32°F) or above 54°C (130°F). GPS required.			MISSED APPROACH: Climb to 4600 on track 126° to COKOR and on track 124° to GILRO and hold.			
D-ATIS	NORCAL APP CON	SAN JOSE TOWER ★	GND CON	CLNC DEL	CPDLC	UNICOM
126.95	120.1 290.25	124.0 (CTAF) 257.6	121.7	118.0		122.95



<div>MISSED APCH FIX 5 NM 125° 305° GILRO</div>		<div></div>		<div>4600 tr 126°</div>		<div>COKOR </div>		<div>tr 124°</div>		<div>GILRO △</div>	
<div>1100 HINIR 1100</div>		<div>VGSI and RNAV glidepath not coincident (VGSI Angle 3.00/TCH 70).</div>		<div>126°</div>		<div>See planview for multiple IF locations.</div>		<div>RW12L</div>			
<div>GP 3.00° TCH 57</div>		<div>3.2 NM</div>									
CATEGORY		A		B		C		D			
RNP 0.18 DA				385-1½		341 (400-1½)					
RNP 0.30 DA				451-1¾		407 (400-1¾)					
AUTHORIZATION REQUIRED											