

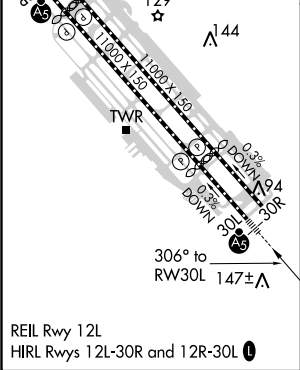
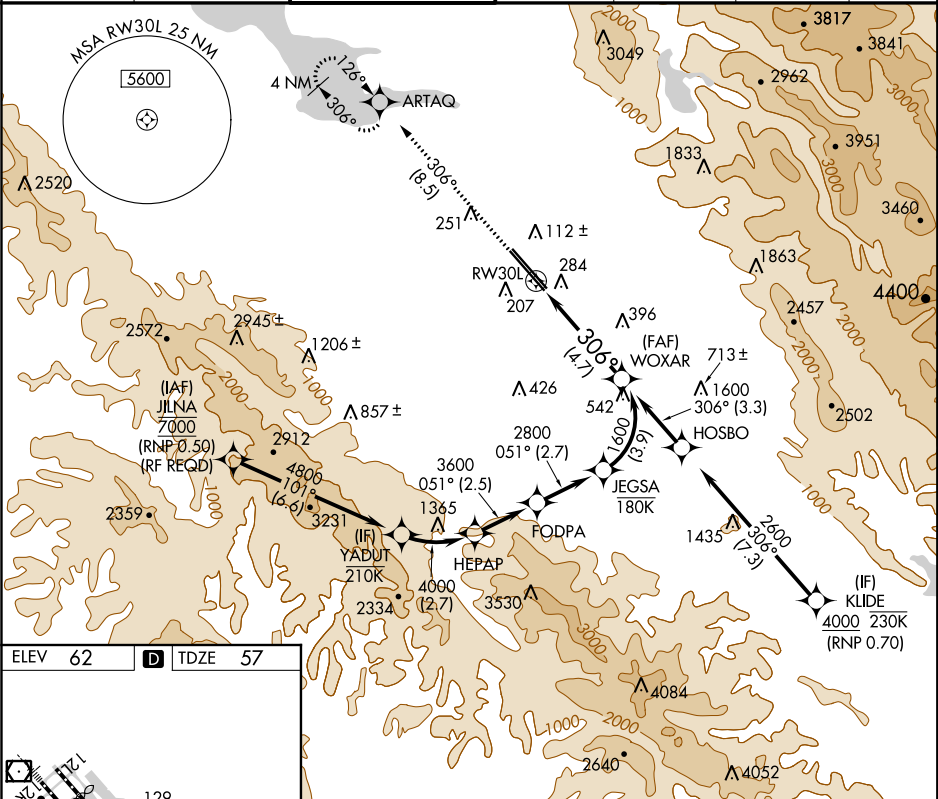
APP CRS	Rwy Idg	7614
306°	TDZE	57
	Apt Elev	62

RNAV (RNP) Z RWY 30L

NORMAN Y MINETA SAN JOSE INTL (SJC)

<div><div></div><div>For uncompensated Baro-VNAV systems, procedure NA below -1°C (31°F) or above 54°C (130°F). GPS required. For inoperative MALSR, increase RNP 0.15 all Cats visibility to RVR 6000 and increase RNP 0.30 all Cats visibility to 1½ mile.</div></div>	<div>MALSR</div> <div><div></div><div></div></div> <div>MISSED APPROACH: Climb to 2300 on track 306° to ARTAQ and hold.</div>
--	---

D-ATIS	NORCAL APP CON	SAN JOSE TOWER ★	GND CON	CLNC DEL	CPDLC	UNICOM
126.95	120.1 290.25	124.0 (CTAF) 257.6	121.7	118.0		122.95



2300 ↑ tr 306°	ARTAQ 	VGSI and RNAV glidepath not coincident (VGSI Angle 3.00/TCH 70).	WOXAR	
See planview for multiple IF locations.				
CATEGORY	A	B	C	D
RNP 0.15 DA	421/40 364 (400-¾)			
RNP 0.30 DA	544/60 487 (500-1¼)			
AUTHORIZATION REQUIRED				