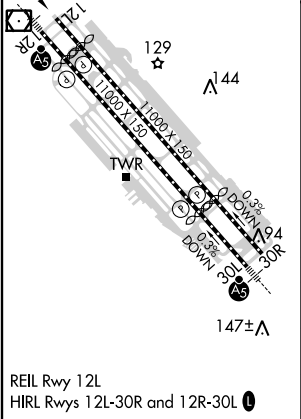
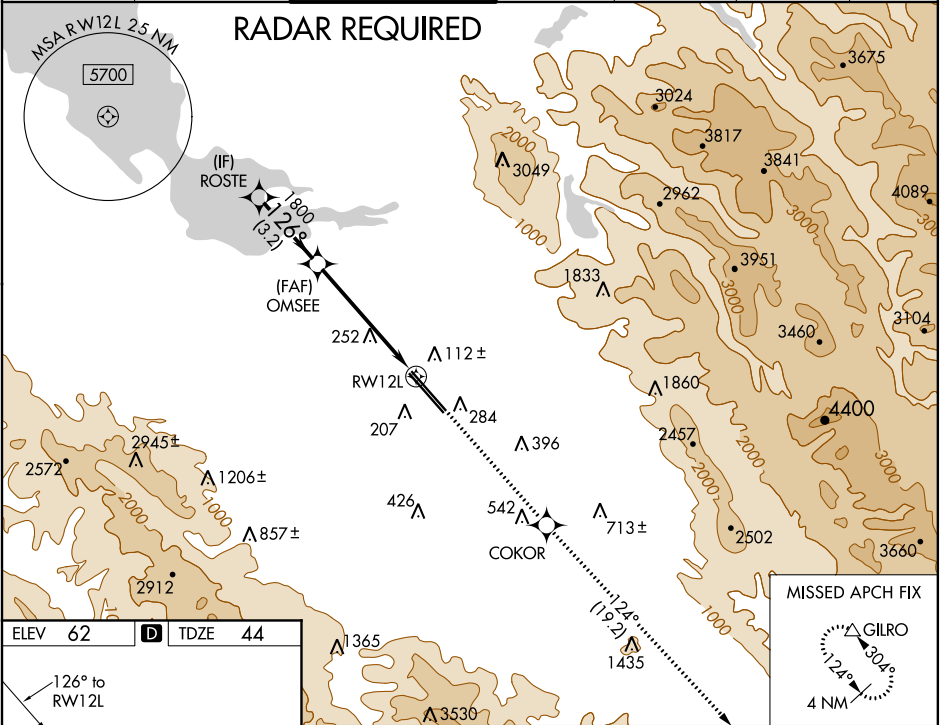


WAAS CH 69501 W12B	APP CRS 126°	Rwy Idg TDZE Apt Elev	8833 44 62
--	------------------------	-----------------------------	---------------------------------------

RNAV (GPS) Y RWY 12L
NORMAN Y MINETA SAN JOSE INTL (SJC)

For uncompensated Baro-VNAV systems, LNAV/VNAV NA below -1°C (31°F) or above 54°C (130°F). DME/DME RNP- 0.3 NA.				MISSED APPROACH: Climb to 4600 direct COKOR and on track 124° to GILRO and hold.		
--	--	--	--	--	--	--

D-ATIS 126.95	NORCAL APP CON 120.1 290.25	SAN JOSE TOWER ★ 124.0 (CTAF) 0 257.6	GND CON 121.7	CLNC DEL 118.0	CPDLC	UNICOM 122.95
-------------------------	---------------------------------------	---	-------------------------	--------------------------	-------	-------------------------



VGSI and RNAV glidepath not coincident (VGSI Angle 3.00/TCH 70).			
ROSTE	OMSEE	4600	COKOR
2300	1800	↑	tr 124°
*LNAV only			
GP 3.00° TCH 57			
3.2 NM 4.1 NM 1.3 NM			
CATEGORY	A	B	C
LPV	DA	294-3/4	250 (300-3/4)
LNAV/VNAV	DA	341-1	297 (300-1)
LNAV MDA	520-1	476 (500-1)	520-13/8 476 (500-13/8)