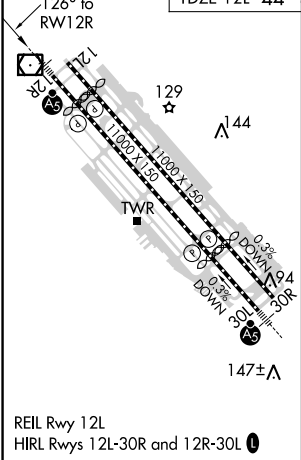
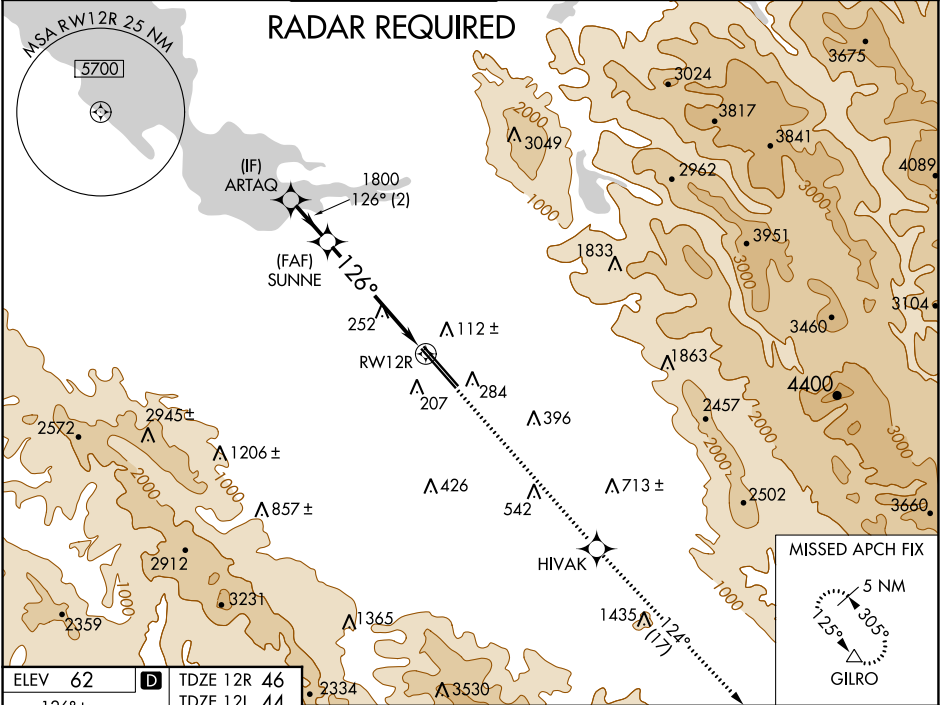


WAAS CH <b>90106</b> <b>W12A</b>	APP CRS <b>126°</b>	12R Rwy ldg <b>8587</b> TDZE <b>46</b> Apt Elev <b>62</b>	12L <b>8833</b> <b>44</b> <b>62</b>
--	------------------------	--	--

**RNAV (GPS) Y RWY 12R**  
NORMAN Y MINETA SAN JOSE INTL (SJC)

▼ For uncompensated Baro-VNAV systems, LNAV/VNAV NA below -1°C (31°F) or above 54°C (130°F). DME/DME RNP-0.3 NA. For inoperative MALSR, increase LNAV/VNAV all Cats visibility to 1 mile and LNAV Cats C/D visibility to 1½ mile.		MALSR Rwy 12R 	MISSED APPROACH: Climb to 4600 direct HIWAK and on track 124° to GILRO and hold.		
D-ATIS <b>126.95</b>	NORCAL APP CON <b>120.1 290.25</b>	SAN JOSE TOWER ★ <b>124.0 (CTAF) 0 257.6</b>	GND CON <b>121.7</b>	CLNC DEL <b>118.0</b>	UNICOM <b>122.95</b>



VGSI and RNAV glidepath not coincident (VGSI Angle 3.00/TCH 75).		4600 ↑ HIVAK tr 124° GILRO △	
ARTAQ		SUNNE	
1800		1800	
GP 3.00° TCH 58		*1.3 NM to RW12R	
2 NM		4.1 NM	
CATEGORY		1.3 NM	
LPV DA		246-½ 200 (200-½)	
LNAV/ VNAV DA		371-5/8 325 (400-5/8)	
LNAV MDA		520-½ 474 (500-½)	
SIDESTEP 12L		520-1 476 (500-1)	