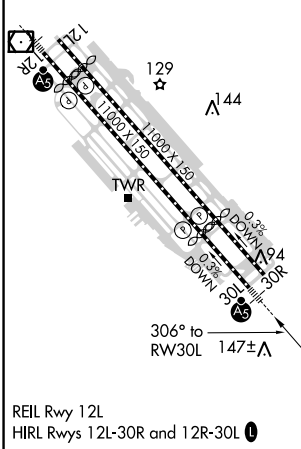
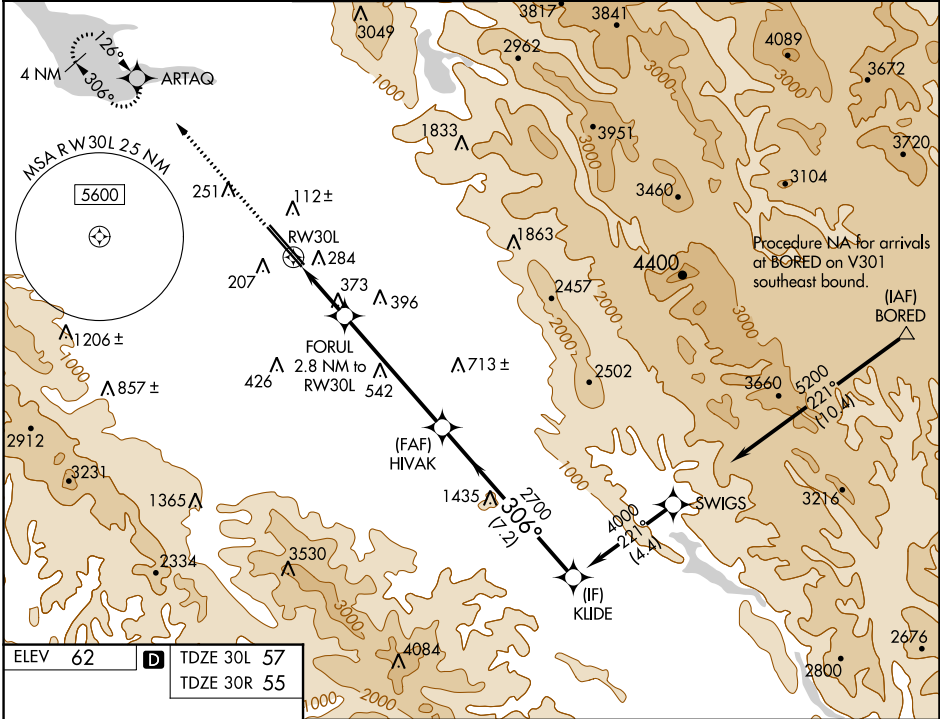


WAAS CH 97306 W30A	APP CRS 306°	30L Rwy Idg 7614 TDZE 57 Apt Elev 62	30R 7597 55 62
--	------------------------	--	--

RNAV (GPS) Y RWY 30L
NORMAN Y MINETA SAN JOSE INTL (SJC)

For uncompensated Baro-VNAV systems, LNAV/VNAV NA below -1°C (31°F) or above 54°C (130°F). DME/DME RNP-0.3 NA. # RVR 1800 authorized with use of FD or AP or HUD to DA.				MALSR Rwy 30L 	MISSED APPROACH: Climb to 2300 direct ARTAQ and hold.	
D-ATIS 126.95	NORCAL APP CON 120.1	290.25	SAN JOSE TOWER ★ 124.0 (CTAF) 0 257.6	GND CON 121.7	CLNC DEL 118.0	UNICOM 122.95



2300 ↑ ARTAQ		VGSI and RNAV glidepath not coincident (VGSI Angle 3.00/TCH 70).		KLIDE	
* LNAV only		FORUL 2.8 NM to RW30L		HIVAK 2700	
RW30L		* 1.6 NM to RW30L		4000	
1000*		2700		GP 3.00° TCH 54	
1.6 NM		1.2 NM		5.3 NM	
7.2 NM					
CATEGORY	A	B	C	D	
LPV DA #	257/24		200 (200-½)		
LNAV/ VNAV DA	540/60		483 (500-1¼)		
LNAV MDA	640/24		583 (600-½)		640-1¼ 583 (600-1¼)
SIDESTEP 30R	640-1		585 (600-1)		

SW-2, 03 DEC 2020 to 31 DEC 2020

SW-2, 03 DEC 2020 to 31 DEC 2020