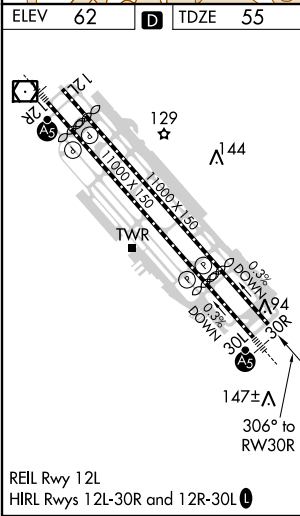
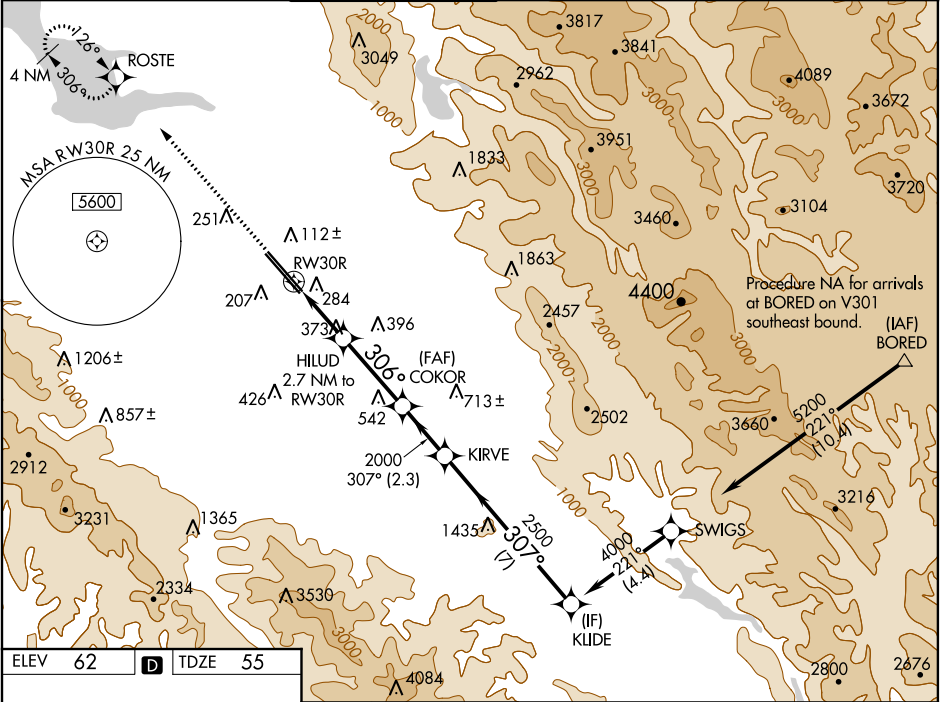


WAAS CH <b>72901</b> <b>W30B</b>	APP CRS <b>306°</b>	Rwy Idg <b>7597</b> TDZE <b>55</b> Apt Elev <b>62</b>
--	------------------------	---

RNAV (GPS) Y RWY 30R

NORMAN Y MINETA SAN JOSE INTL (SJC)

▼ For uncompensated Baro-VNAV systems, LNAV/VNAV NA below -1°C (31°F) or above 54°C (130°F). DME/DME RNP-0.3 NA.				MISSED APPROACH: Climb to 2300 direct ROSTE and hold.			
D-ATIS <b>126.95</b>	NORCAL APP CON <b>120.1 290.25</b>	SAN JOSE TOWER ★ <b>124.0 (CTAF) 0 257.6</b>		GND CON <b>121.7</b>	CLNC DEL <b>118.0</b>	CPDLC	UNICOM <b>122.95</b>



2300 ROSTE		VGSi and RNAV glidepath not coincident (VGSi Angle 3.00/TCH 69).			
*LNAV only		HILUD 2.7 NM to RW30R	COKOR	KIRVE	KIUDE
*1.6 NM to RW30R		306° 307° 4000			
1.6 NM 1.1 NM 3.2 NM 2.3 NM 7 NM		960* 2500 2000			
GP 3.00° TCH 55					
CATEGORY		A	B	C	D
LPV DA		255-3/4		200 (200-3/4)	
LNAV/VNAV DA		541-15/8		486 (500-15/8)	
LNAV MDA		640-1 585 (600-1)		640-13/4 585 (600-13/4)	
CIRCLING		640-1 578 (600-1)	700-1 638 (700-1)	700-13/4 638 (700-13/4)	700-2 638 (700-2)