

ILS or LOC/DME RWY 32
CHARLES M SCHULZ-SONOMA COUNTY (STS)

MISSED APPROACH: Climb to 1020 on STS VOR/DME R-310 and climbing left turn to 6000 to CABEX/STS 21.3 DME and hold, continue climb-in-hold to 6000.

Topographic map of the Santa Rosa area. The map shows elevation contours (1000, 2000, 3000 feet) and several radio towers. A callout box highlights the 'LOCALIZER 113.0 STS' tower. A speech bubble points to the 'SANTA ROSA 113.0 STS' tower. A legend on the left shows a compass rose with bearings 130°, 310°, and 113.0°.

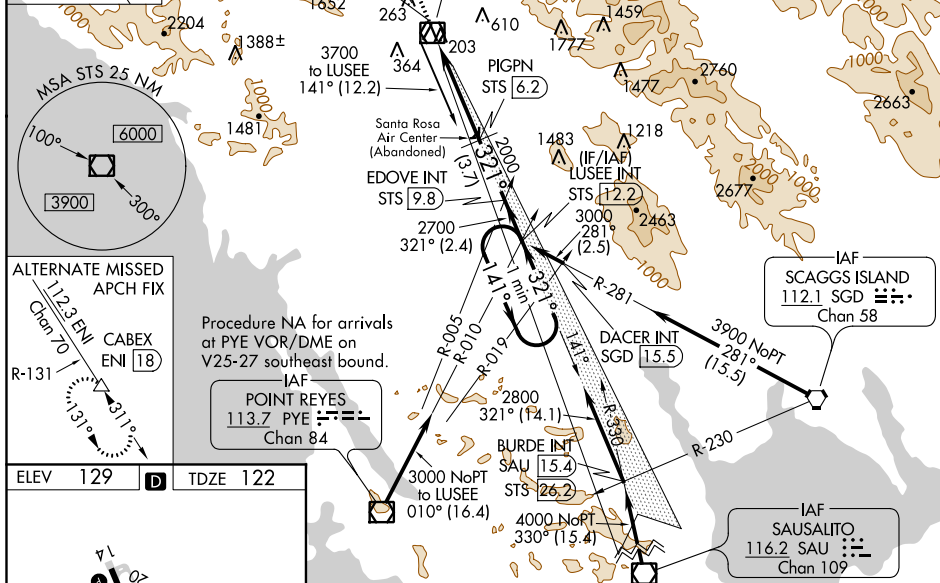


Figure 10-10 illustrates a 3D visualization of a flight path. The left side shows a top-down map view of a runway with a 321° heading, a 5.7 NM distance from the FAF, and a 321° heading. The right side shows a 3D perspective view of the same flight path, with a 321° heading, a 5.7 NM distance from the FAF, and a 321° heading. The 3D view includes a table of flight parameters.

CATEGORY	A	B	C	D
S-ILS 32	377/24 255 (300-½)			
S-LOC 32	580/24 458 (500-½) 580/45 458 (500-¾)			
CIRCLING	600-1 471 (500-1)	680-1 551 (600-1)	1080-3 951 (1000-3)	1420-3 1291 (1300-3)