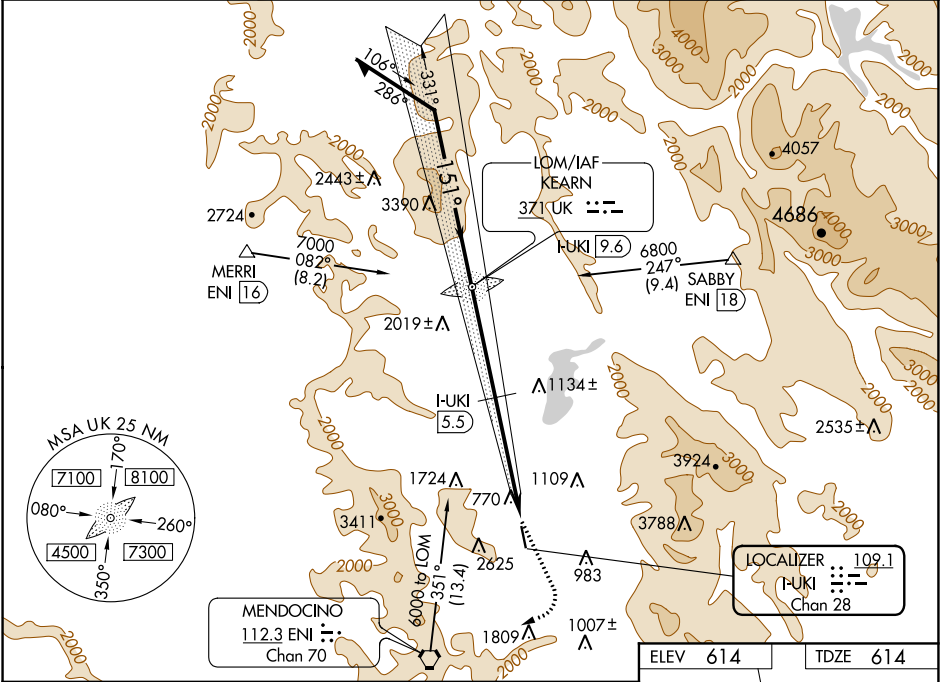


LOC/DME I-UKI	APP CRS	Rwy Idg	4415
109.1	151°	TDZE	614
Chan 28		Apt Elev	614

LOC RWY 15
UKIAH MUNI (UKI)

<p>NA Circling NA west of Rwy 15-33. When local altimeter setting not received, procedure NA.</p>	<p>MISSED APPROACH: Climbing left turn to 4000 via heading 140°, then climbing right turn to 6000 direct ENI VORTAC.</p>
--	---

ASOS 119.275	OAKLAND CENTER 127.8 353.5	UNICOM 123.0 (CTAF) 0
-----------------	-------------------------------	--------------------------



Remain within 10 NM		UK LOM I-UKI 9.6	4000	6000	ENI
Use I-UKI DME when on localizer course.			4000	6000	
			4.1 NM	3.6 NM	1.1
CATEGORY	A	B	C	D	
S-15	2400-1¼ 1786 (1800-1¼)	2400-1½ 1786 (1800-1½)	2400-3	1786 (1800-3)	
CIRCLING	2400-1¼ 1786 (1800-1¼)	2400-1½ 1786 (1800-1½)	2400-3	1786 (1800-3)	
DME MINIMUMS					
S-15	1720-1¼ 1106 (1200-1¼)	1720-1½ 1106 (1200-1½)	1720-3	1106 (1200-3)	
CIRCLING	1720-1¼ 1106 (1200-1¼)	1720-1½ 1106 (1200-1½)	1720-3	1106 (1200-3)	

ELEV 614	TDZE 614
151° 8.8 NM from FAF	
693 ±	
4423 X 150	
0.3% UP	
1118	654 ±
MIRL Rwy 15-33	
REIL Rws 15 and 33	
FAF to MAP 7.7 NM	
Knots	60 90 120 150 180
Min:Sec	7:42 5:08 3:51 3:05 2:34

SW-2, 03 DEC 2020 to 31 DEC 2020

SW-2, 03 DEC 2020 to 31 DEC 2020