

MARYSVILLE, CALIFORNIA

HI-ILS or LOC Z RWY 15

LOC I-BAB <u>109.5</u>	APCH CRS 145°	Rwy Idg 12,001 TDZE 113 Arpt Elev 113
----------------------------------	-------------------------	------------------------------------------------------------------

JAL-771 (USAF)

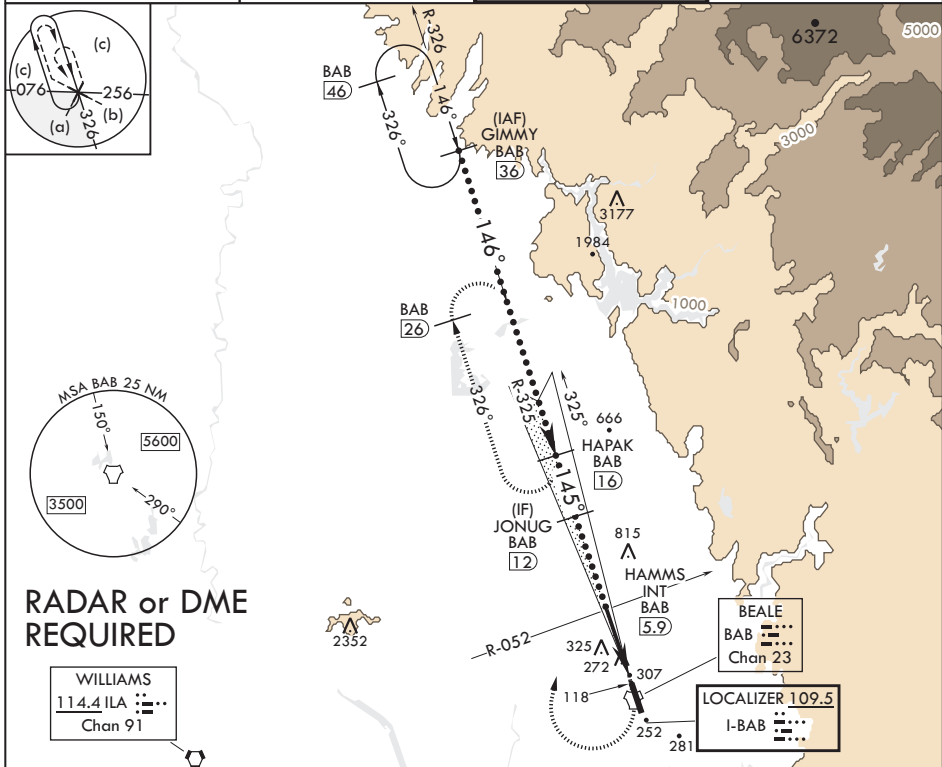
BEALE AFB (KBAB)

T * When ALS inop, increase CAT CDE RVR to 40 and vis to 3/4 mile.
 ** When ALS inop, increase CAT CDE vis to 1 3/8 miles.
 *** Circling not authorized E of Rwy 15-33.

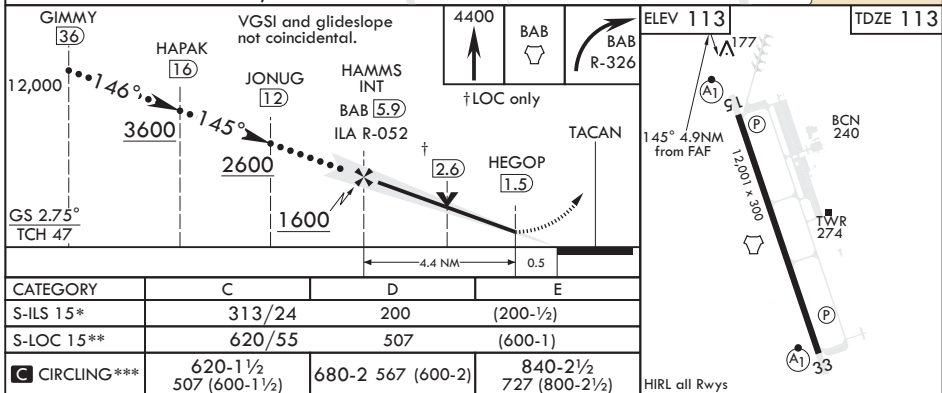
ALSF-1

MISSED APPROACH: Climb to 4400 direct to BAB TACAN. Turn right to intercept BAB R-326 to HAPAK and hold, continue climb in hold to 4400.

<p>ATIS★</p> <p>124.55 273.5</p>	<p>NORCAL APP CON</p> <p>125.4 259.1</p>	<p>TOWER★</p> <p>119.4 284.75</p>	<p>GND CON</p> <p>121.6 257.75</p>
----------------------------------	------------------------------------------	-----------------------------------	------------------------------------



EMERG SAFE ALT 100 NM 13,700



MARYSVILLE, CALIFORNIA

39°08'N - 121°26'W

BEALE AFB (KBAB)

Amdt 5 20JUL17

HI-ILS or LOC Z RWY 15

SW-2, 03 DEC 2020 to 31 DEC 2020

SW-2, 03 DEC 2020 to 31 DEC 2020