

MARYSVILLE, CALIFORNIA

HI-ILS or LOC Z RWY 33

LOC I-MIZ <u>109.5</u>	APCH CRS 325°	Rwy Idg 12,001 TDZE 105 Arpt Elev 113
----------------------------------	-------------------------	--

JAL-771 (USAF)

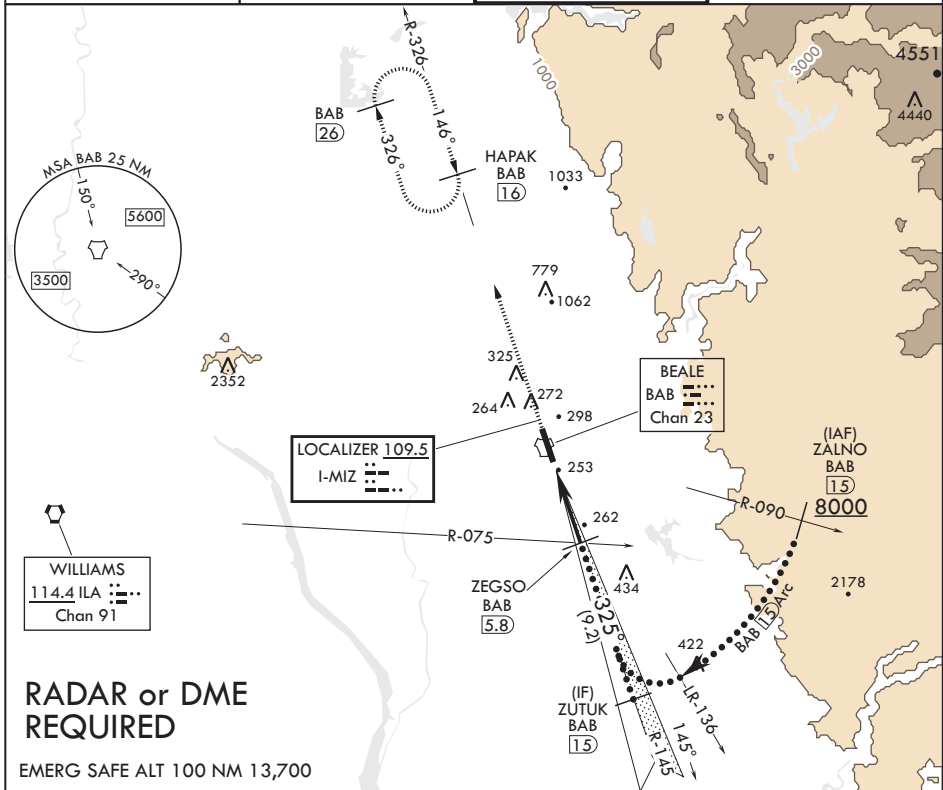
BEALE AFB (KBAB)

T * When ALS inop, increase CAT CDE RVR to 40 and vis to 3/4 mile.
 ** When ALS inop, increase CAT CDE RVR to 60 vis to 1 1/8 miles.
 *** Circling not authorized E of Rwy 15-33.

ALSF-1

MISSED APPROACH: Climb to 3600 intercept BAB R-326 to HAPAK and hold.

<p>ATIS★</p> <p>124.55 273.5</p>	<p>NORCAL APP CON</p> <p>125.4 259.1</p>	<p>TOWER★</p> <p>119.4 284.75</p>	<p>GND CON</p> <p>121.6 257.75</p>
----------------------------------	--	-----------------------------------	------------------------------------

RADAR or DME
REQUIRED

EMERG SAFE ALT 100 NM 13,700

Diagram illustrating the ZEGSO ILS approach. The approach is a 325° approach, passing through ZAPUX (1.5) and ZUTUK (1.5) to ZEGSO (5.8). The final approach segment is 3.25 NM long, with a 3200-foot MSL glide slope and a 3.00-degree TCH. The approach is for Category C, D, and E aircraft. The diagram also shows the ZEGSO ILS R-075, ZEGSO ILS R-145, and ZEGSO ILS R-090. The diagram includes a table of altitudes and a table of circling altitudes.

CATEGORY	C	D	E
S-ILS 33*	305/24	200	(200-1/2)
S-LOC 33**	520/40	415	(500-3/4)

CIRCLING ***	600-1 1/2 487 (500-1 1/2)	680-2 567 (600-2)	840-2 1/2 727 (800-2 1/2)

MARYSVILLE, CALIFORNIA

39°08'N - 121°26'W

BEALE AFB (KBAB)

Amdt 5 20JUL17

HI-ILS or LOC Z RWY 33