

MARYSVILLE, CALIFORNIA

ILS or LOC Y RWY 15

LOC I-BAB	APCH CRS	Rwy Idg	12,001
109.5	145°	TDZE	113
		Arpt Elev	113

AL-771 (USAF)

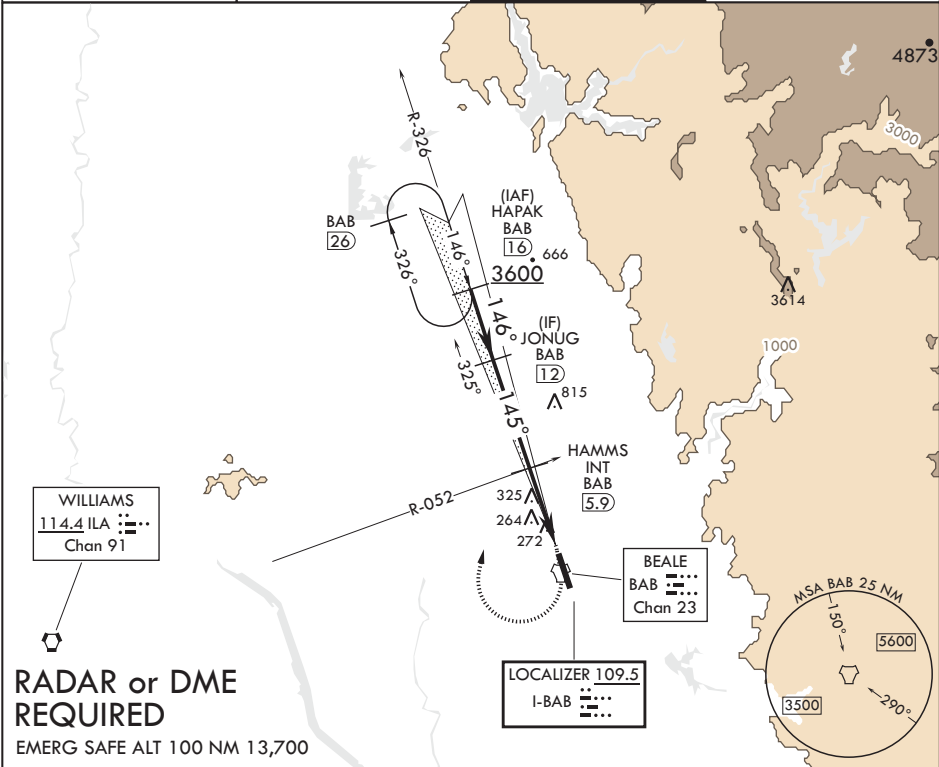
BEALE AFB (KBAB)

**⚠** \* When ALS inop, increase RVR to 40 and vis to 3/4 mile.  
\*\* When ALS inop, increase CAT AB RVR to 55 and vis to 1 mile, CAT CDE vis to 1 3/8 miles.  
\*\*\* Circling not authorized E of Rwy 15-33.

ALSF-1

**MISSED APPROACH:** Climb to 4400 direct BAB TACAN. Turn right to intercept BAB R-326 to HAPAK and hold, continue climb in hold to 4400.

ATIS★ 124.55 273.5	NORCAL APP CON 125.4 259.1	TOWER★ 119.4 284.75	GND CON 121.6 257.75
-----------------------	-------------------------------	------------------------	-------------------------



RADAR or DME  
REQUIRED

EMERG SAFE ALT 100 NM 13,700

JONUG 12	VGSI and glideslope not coincident.	4400	BAB	HAPAK BAB 16	ELEV 113	TDZE 113
2600	145°	↑ LOC only	↑ 2.6	TACAN	145° 4.9 NM from FAF	127
1600	GS 2.75° TCH 47	4.4 NM	0.5	HEGOP 1.5	12001 x 300	33
CATEGORY	A	B	C	D	E	
S-ILS 15*	313/24	200	(200-1/2)			
S-LOC 15**	620/24 507 (600-1/2)	620/55	507 (600-1)			
CIRCLING***	620-1 507 (600-1)	620-1 1/2 507 (600-1 1/2)	680-2 567 (600-2)	840-2 1/2 727 (800-2 1/2)		

MARYSVILLE, CALIFORNIA

39°08'N - 121°26'W

BEALE AFB (KBAB)

Amdt 5 20JUL17

ILS or LOC Y RWY 15

SW-2, 03 DEC 2020 to 31 DEC 2020

SW-2, 03 DEC 2020 to 31 DEC 2020