

MARYSVILLE, CALIFORNIA

ILS or LOC Y RWY 33

LOC I-MIZ 109.5	APCH CRS 325°	Rwy Idg 12,001
		TDZE 105
		Arpt Elev 113

AL-771 (USAF)

BEALE AFB (KBAB)

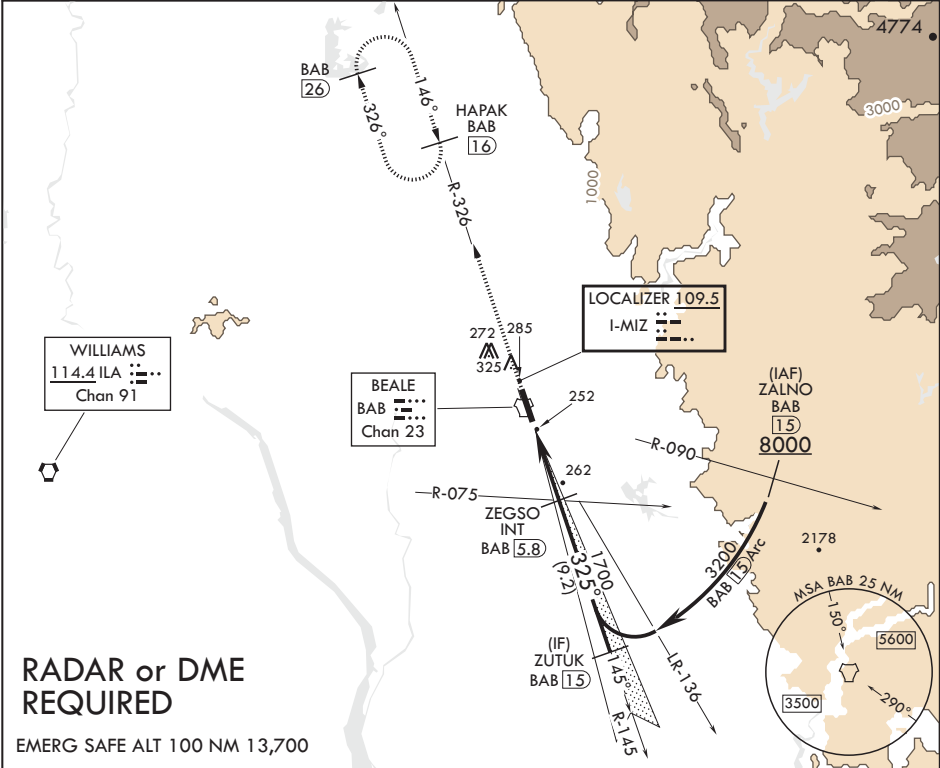
**⚠** \* When ALS inop, increase RVR to 40 and vis to 3/4 mile.  
\*\* When ALS inop, increase CAT AB RVR to 55 and vis to 1 mile, CAT CDE RVR to 60 and vis to 1 1/8 miles.  
\*\*\* Circling not authorized E of Rwy 15-33.

ALS F-1

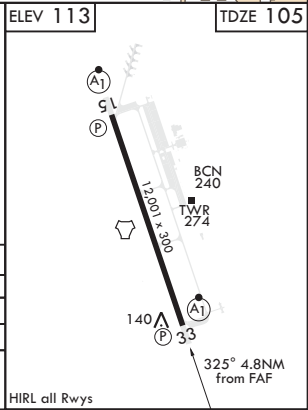
A1

MISSED APPROACH: Climb to 3600 intercept BAB TACAN R-326 to HAPAK and hold.

ATIS★ 124.55 273.5	NORCAL APP CON 125.4 259.1	TOWER★ 119.4 284.75	GND CON 121.6 257.75
-----------------------	-------------------------------	------------------------	-------------------------



3600 BAB R-326	HAPAK BAB 16	†LOC only	ZEGSO ILA R-075 INT BAB 5.8	ZUTUK BAB 15	ELEV 113	TDZE 105
CATEGORY	A	B	C	D	E	
S-ILS 33*	305/24		200	(200-1/2)		
S-LOC 33**	520/24	415 (500-1/2)	520/40	415	(500-3/4)	
CIRCLING***	600-1	487 (500-1)	600-1 1/2 487 (500-1 1/2)	680-2 567 (600-2)	840-2 1/2 727 (800-2 1/2)	



MARYSVILLE, CALIFORNIA

39°08'N - 121°26'W

BEALE AFB (KBAB)

Amdt 5 20JUL17

ILS or LOC Y RWY 33

SW-2, 03 DEC 2020 to 31 DEC 2020

SW-2, 03 DEC 2020 to 31 DEC 2020