

MARYSVILLE, CALIFORNIA

TACAN Y RWY 15

TACAN BAB	APCH CRS	Rwy ldg	12,001
Chan 23	153°	TDZE	113
		Arpt Elev	113

AL-771 (USAF)

BEALE AFB (KBAB)

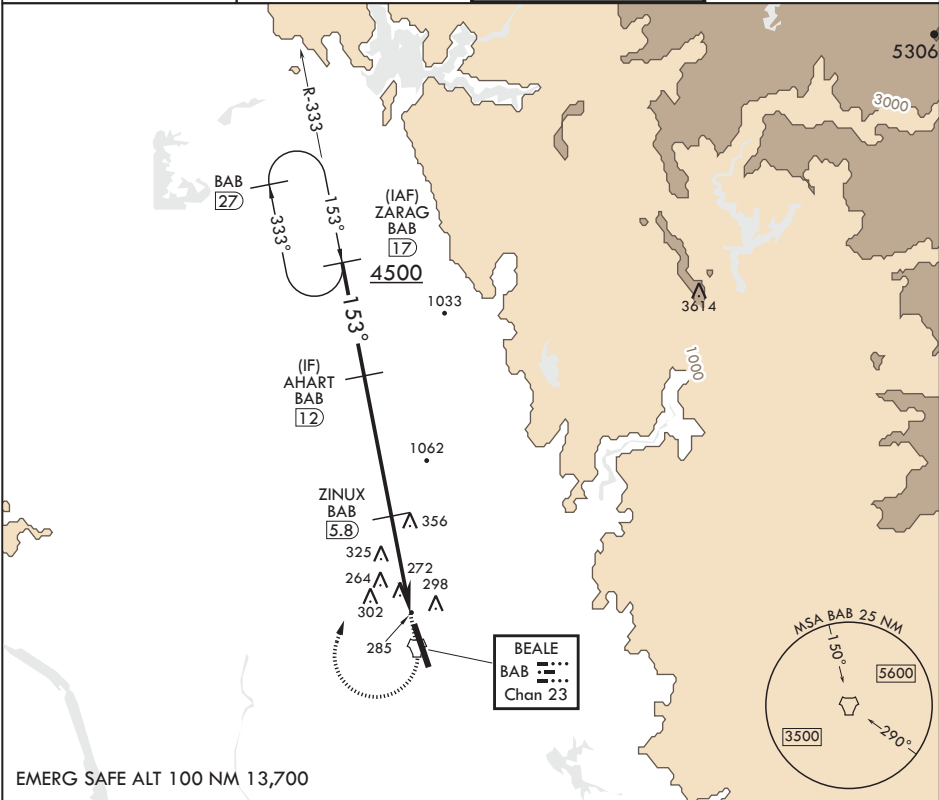
⚠ * When ALS inop, increase CAT AB RVR to 55 and vis to 1 mile, CAT CDE vis to 1 1/2 miles.
** Circling not authorized E of Rwy 15-33.

ALSF-1



MISSED APPROACH: Climb to 4700 direct to BAB TACAN. Turn right to intercept BAB R-333 to ZARAG and hold, continue climb in hold to 4700.

ATIS★ 124.55 273.5	NORCAL APP CON 125.4 259.1	TOWER★ 119.4 284.75	GND CON 121.6 257.75
-----------------------	-------------------------------	------------------------	-------------------------



ZARAG (17) 4500 → 153° → 2600 → 1600 → ZINUX (5.8) → 2.6 → AGEKE (1.5) → TACAN

2.83° ≥ TCH 53

4.3 NM → .5

4700

BAB

BAB R-333

ELEV 113

153° 4.8NM from FAF

TDZE 113

BCN 240

TWR 274

33

CATEGORY	A	B	C	D	E
S-15*	640/24 527 (600-1/2)		640/55 527 (600-1)		
C CIRCLING**	640-1 527 (600-1)		640-1 1/2 527 (600-1 1/2)	680-2 567 (600-2)	840-2 1/2 727 (800-2 1/2)

HIRL all Rwys

MARYSVILLE, CALIFORNIA

39°08'N - 121°26'W

BEALE AFB (KBAB)

Amdt 5 20JUL17

TACAN Y RWY 15

SW-2, 03 DEC 2020 to 31 DEC 2020

SW-2, 03 DEC 2020 to 31 DEC 2020