

MARYSVILLE, CALIFORNIA

TACAN Y RWY 33

TACAN BAB Chan 23	APCH CRS 317°	Rwy ldg TDZE Arpt Elev	12,001 105 113
----------------------	------------------	------------------------------	----------------------

AL-771 (USAF)

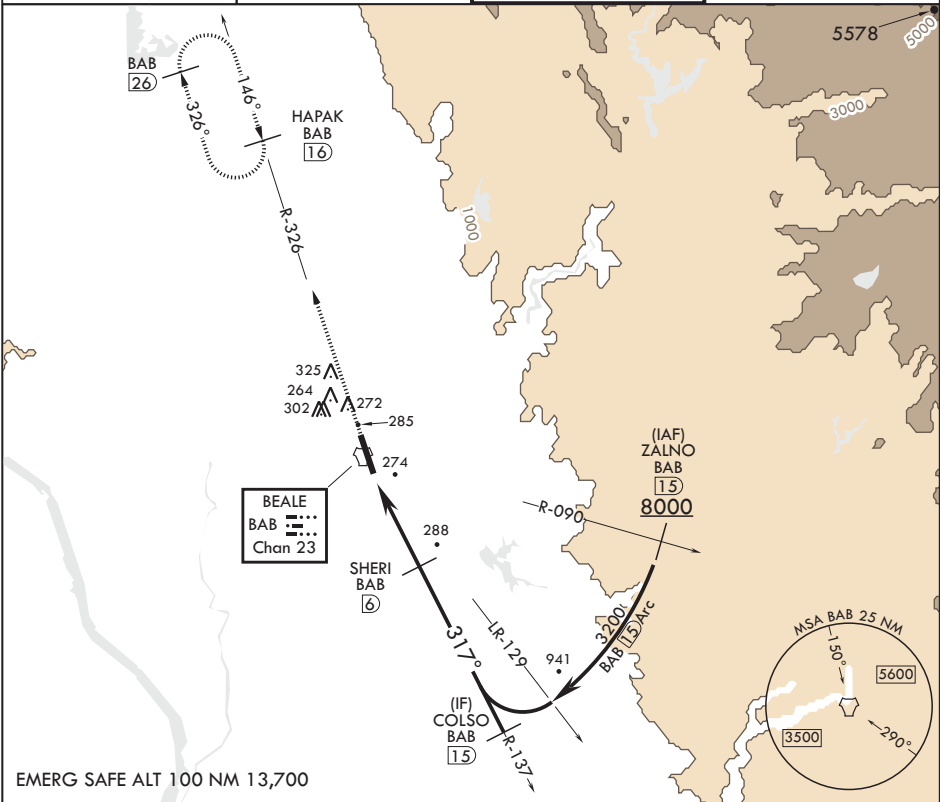
BEALE AFB (KBAB)

⚠ * When ALS inop, increase CAT AB RVR to 55 and vis to 1 mile, CAT CDE vis to 1 1/4 miles.
** Circling not authorized E of Rwy 15-33.

ALSF-1

MISSED APPROACH: Climb to 3600 intercept BAB TACAN R-326 to HAPAK and hold.

ATIS★ 124.55 273.5	NORCAL APP CON 125.4 259.1	TOWER★ 119.4 284.75	GND CON 121.6 257.75
-----------------------	-------------------------------	------------------------	-------------------------



EMERG SAFE ALT 100 NM 13,700

3600 BAB R-326

HAPAK BAB 16

TACAN

EGUYO 1.5

2.2

SHERI 6

1800

COLSO 15

3200

317°

≤ 3.09°

TCH 51

5

4.5 NM

CATEGORY	A	B	C	D	E
S-33*	540/24 435 (500-1/2)		540/40 435 (500-3/4)		
CIRCLING**	600-1 487 (500-1)		600-1 1/2 487 (500-1 1/2)	680-2 567 (600-2)	840-2 1/2 727 (800-2 1/2)

ELEV 113

TDZE 105

BCN 240

TWR 274

188

33

317° to TACAN

HIRL all Rwy's

MARYSVILLE, CALIFORNIA

39°08'N - 121°26'W

BEALE AFB (KBAB)

Amdt 5 20JUL17

TACAN Y RWY 33

SW-2, 03 DEC 2020 to 31 DEC 2020

SW-2, 03 DEC 2020 to 31 DEC 2020