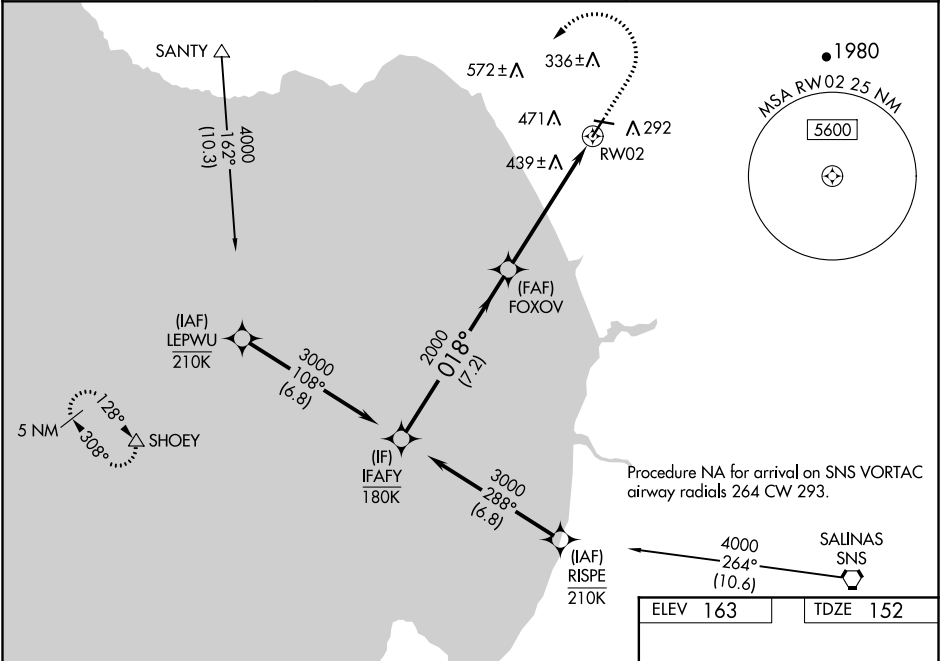


WAAS CH 50144 W02A	APP CRS 018°	Rwy Idg TDZE 152 Apt Elev 163
--	------------------------	---

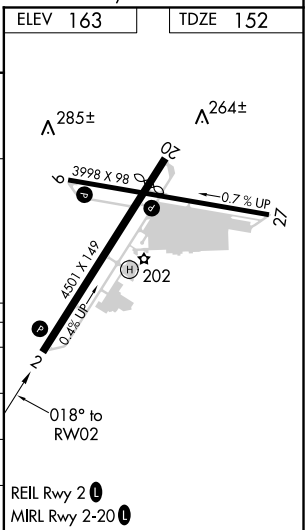
RNAV (GPS) RWY 2
WATSONVILLE MUNI (WVI)

RNP APCH.	MISSED APPROACH: (Do not exceed 185K until SHOEY) Climb to 700 then climbing left turn to 6000 direct SHOEY and hold, continue climb-in-hold to 6000.
⚠ Circling Rwy 27 NA at night. Rwy 2 helicopter visibility reduction below ¾ SM NA. For uncompensated Baro-VNAV systems, LNAV/VNAV NA below -2°C or above 54°C. Circling NA west of Rwy 2-20.	

ASOS 132.275	NORCAL APP CON 127.15 307.125	UNICOM 122.8 (CTAF) 0
------------------------	---	---------------------------------



IFAFY VGSI and RNAV glidepath not coincident (VGSI Angle 3.00/TCH 43).				
FOXOV				
SHOEY				
*1.6 NM to RW02				
RW02				
GP 3.00° TCH 56				
7.2 NM 4.1 NM 1.6 NM				
CATEGORY	A	B	C	D
LPV DA	448-7/8 296 (300-7/8)			
LNAV/VNAV DA	772-13/4 620 (700-13/4)			
LNAV MDA	700-1 548 (600-1)	700-15/8 548 (600-15/8)		
CIRCLING	700-1 537 (600-1)	700-15/8 537 (600-15/8)	1100-3 937 (1000-3)	



SW-2, 03 DEC 2020 to 31 DEC 2020

SW-2, 03 DEC 2020 to 31 DEC 2020