

NDB

MOG

404

APP CRS

356°

Rwy Idg

TDZE

N/A

Apt Elev

2648

NDB or GPS-A

SISKIYOU COUNTY (SIY)

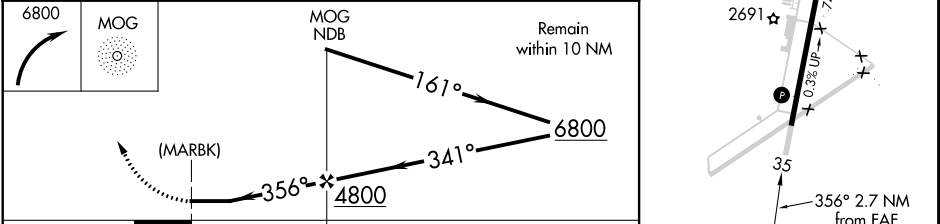
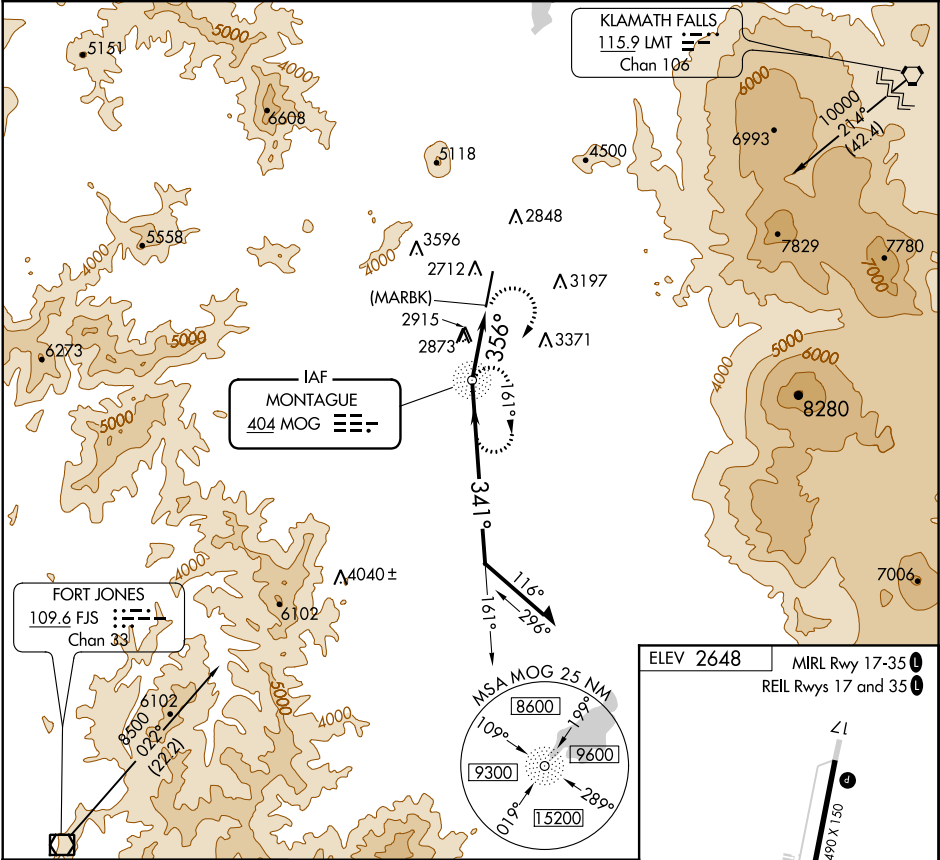
▼

NA

Use Siskiyou County altimeter setting; when not available, use Montague-Yreka Rohrer Field altimeter setting; when neither received, procedure not authorized.

MISSED APPROACH: Climbing right turn to 6800 direct MOG NDB and hold.

ASOS 121.125	SEATTLE CENTER 124.85 306.3	UNICOM 123.0 (CTAF) 0
-----------------	--------------------------------	--------------------------



		2.7 NM										
CATEGORY	A		B		C	D	FAF to MAP 2.7 NM					
CIRCLING	3760-1¼ 1112 (1200-1¼)		3760-1½ 1112 (1200-1½)		3760-3	1112 (1200-3)	Knots	60	90	120	150	180
							Min:Sec	2:42	1:48	1:21	1:05	0:54

SW-2, 03 DEC 2020 to 31 DEC 2020

SW-2, 03 DEC 2020 to 31 DEC 2020