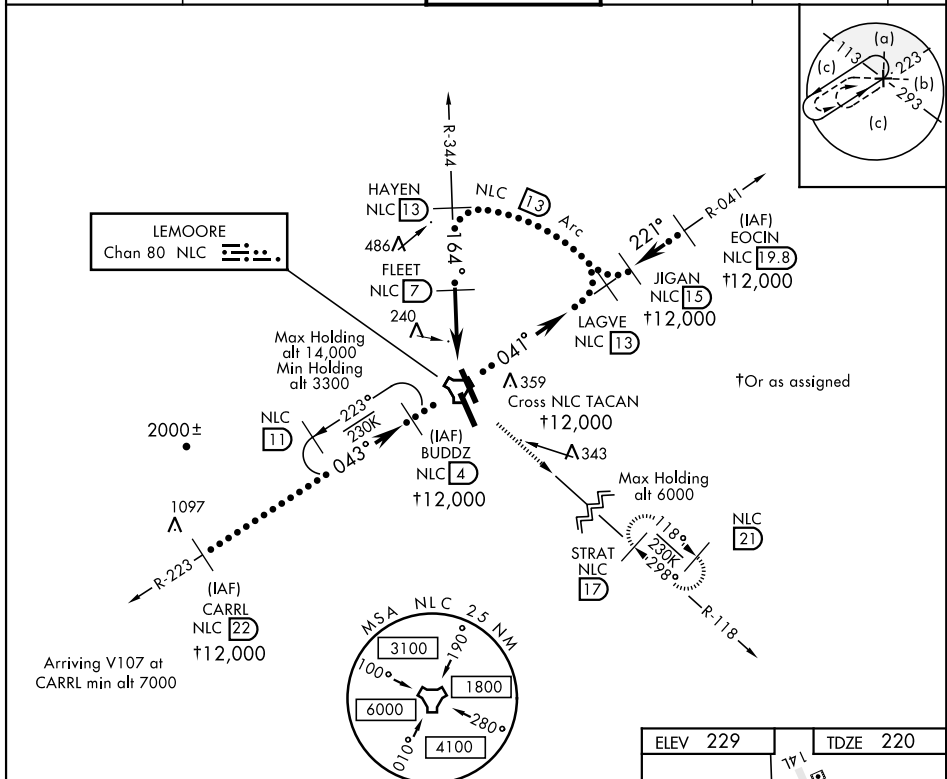


HI-TACAN RWY 14L

TACAN NLC Chan 80	APCH CRS 164°	Rwy Idg 13,502 TDZE 220 Arpt Elev 229	JAL-5067 [USN]	LEMOORE NAS (REEVES FIELD) (KNLC)
-----------------------------	-------------------------	--	----------------	-----------------------------------

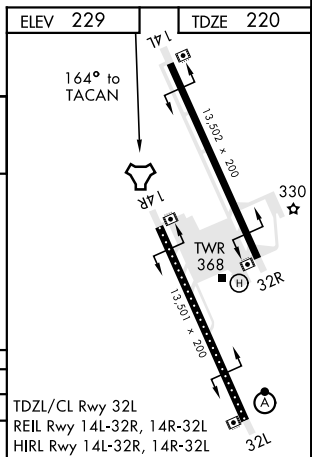
T	MISSED APPROACH: Climb to 700 then climbing left turn to 2000 via heading 142°, intercept NLC R-118 to STRAT and hold.
----------	--

ATIS ★ 121.575 327.15	LEMOORE APP CON N 124.1 S 118.15 269.025	LEMOORE TOWER ★ 128.3 340.2	GND CON 121.65 305.2	CLNC DEL 124.1 371.9	ASR/ PAR
---------------------------------	--	---------------------------------------	--------------------------------	--------------------------------	-------------



EMERG SAFE ALT 100 NM 16,500

LAGVE R-041 13	HAYEN R-344 13	FLEET 7	TACAN
4000	3000	1800	HOKDA 2
2.48°	TCH 54	5 NM	
CATEGORY	C	D	E
S-14L	560/55	340	(400-1)
CIRCLING	680-1½ 451 (500-1½)	780-2	551 (600-2)



HI-TACAN RWY 14L