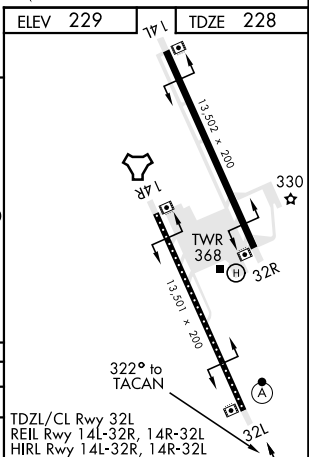
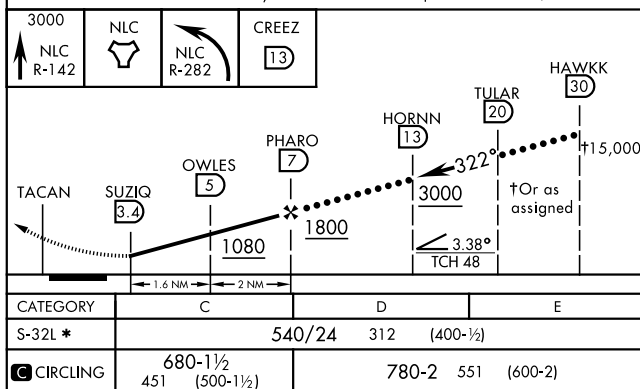
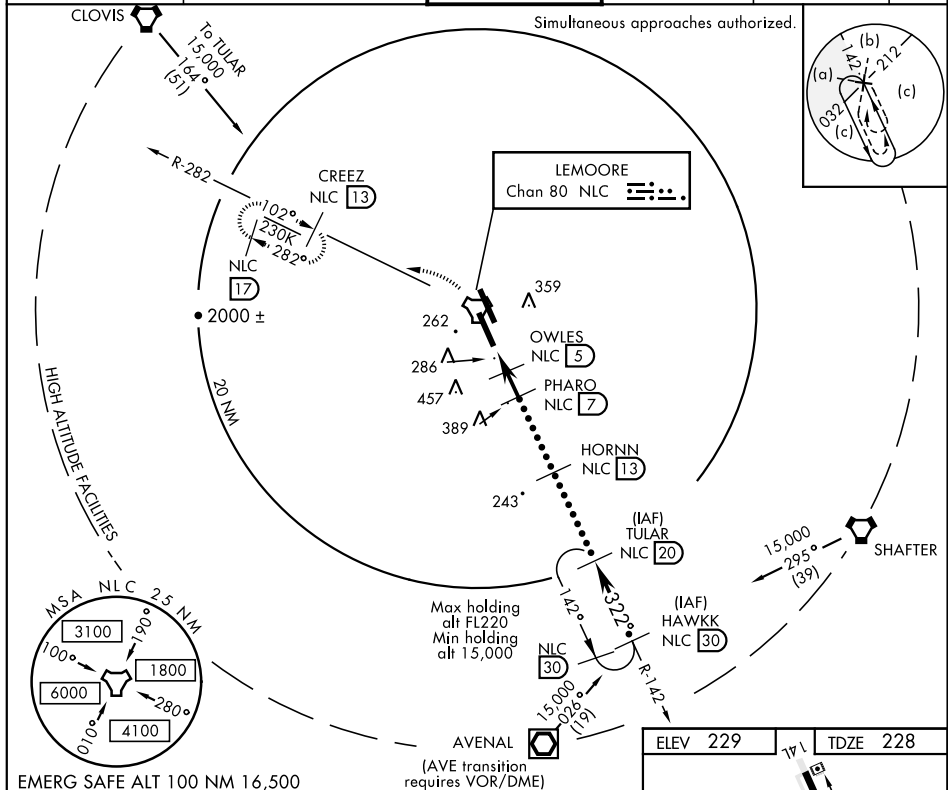


HI-TACAN Z RWY 32L

TACAN NLC Chan 80	APCH CRS 322°	Rwy Idg TDZE Arprt Elev 13,501 228 229	JAL-5067 [USN]	LEMOORE NAS (REEVES FIELD) (KNLC)
-----------------------------	-------------------------	--	----------------	-----------------------------------

✈ * When ALS inop, increase CAT CDE RVR to 55 and vis to 1 mile.	ALS F-2 	MISSED APPROACH: Climb to 3000 via R-142 to NLC TACAN, then via R-282 to CREEZ and hold.
--	--------------------	---

ATIS ★ 121.575 327.15	LEMOORE APP CON N124.1 S118.15 269.025	LEMOORE TOWER ★ 128.3 340.2	GND CON 121.65 305.2	CLNC DEL 124.1 371.9	ASR/ PAR
--	---	--	---------------------------------------	---------------------------------------	-----------------



HI-TACAN Z RWY 32L