

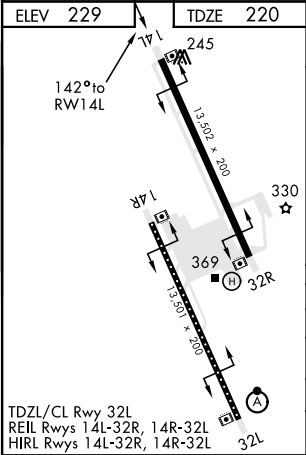
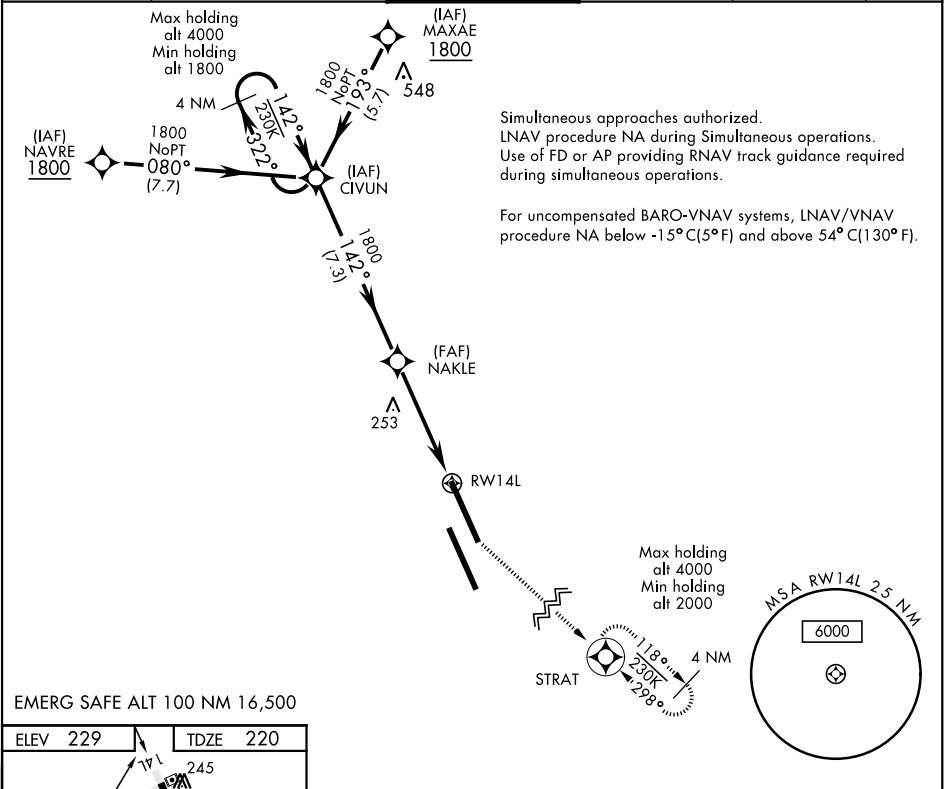
RNAV (GPS) RWY 14L

WAAS Chan 70209 W14A	APCH CRS 142°	Rwy Idg 13,502 TDZE 220 Arpt Elev 229
--	-------------------------	--

AL-5067 [USN]

LEMOORE NAS (REEVES FIELD) (KNLC)

DME/DME RNP-0.3 NA		MISSED APPROACH: Climb to 1200, then climb left turn to 2000 direct STRAT and hold.			
ATIS ★ 121.575 327.15	LEMOORE APP CON N124.1 S118.15 269.025	LEMOORE TOWER ★ 128.3 340.2	GND CON 121.65 305.2	CLNC DEL 124.1 371.9	ASR/PAR



CIVUN	NAKLE	1200	2000	STRAT
1800	1800	↑ 8 NM to RW14L	↑ LNAV Only	
GP 3.00° TCH 54				
4.8 NM				
RW14L				
CATEGORY	A	B	C	D
LPV DA		420/40	200	(200-¾)
LNAV/VNAV DA		470/40	250	(300-¾)
LNAV MDA	520/55	300 (300-1)	520/45	300 (300-7⁄8)
CIRCLING	680-1	451 (500-1)	680-1½ 451 (500-1½)	780-2 551 (600-2)

RNAV (GPS) RWY 14L

SW-2, 03 DEC 2020 to 31 DEC 2020

SW-2, 03 DEC 2020 to 31 DEC 2020