

LEMOORE, CALIFORNIA

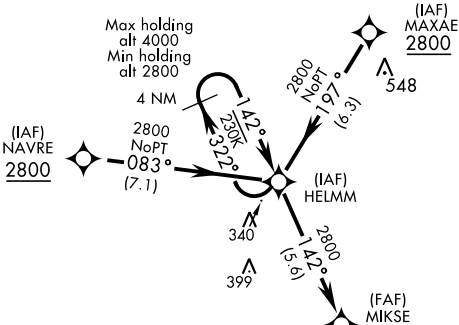
RNAV (GPS) RWY 14R

WAAS Chan 80286 W14B	APCH CRS 142°	Rwy Idg 13,501 TDZE 229 Arpt Elev 229
--	-------------------------	--

AL-5067 [USN]

LEMOORE NAS (REEVES FIELD) (KNLC)

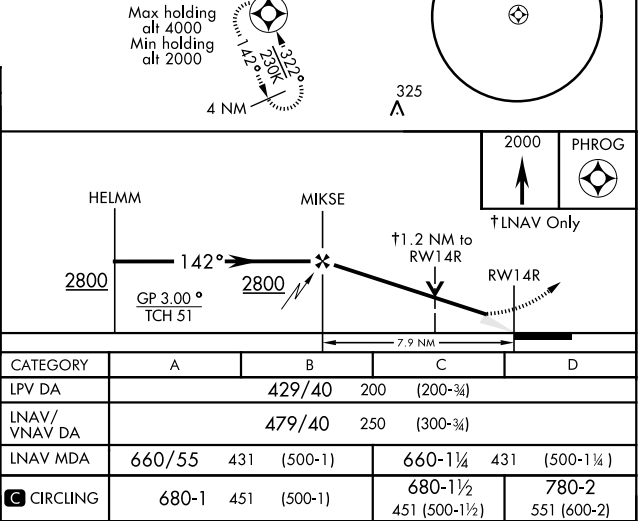
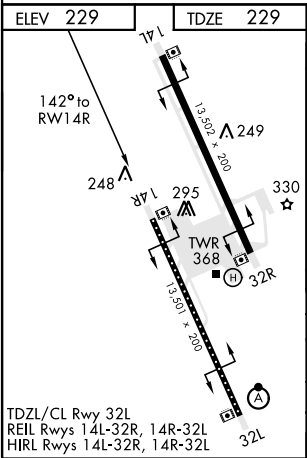
DME/DME RNP-0.3 NA		MISSED APPROACH: Climb to 2000 direct PHROG and hold.			
ATIS ★ 121.575 327.15	LEMOORE APP CON N124.1 S118.15 269.025	LEMOORE TOWER ★ 128.3 360.2	GND CON 121.65 305.2	CLNC DEL 124.1 371.9	ASR/PAR



Simultaneous approaches authorized.
LNAV procedure NA during Simultaneous operations.
Use of FD or AP providing RNAV track guidance required during simultaneous operations.

For uncompensated BARO-VNAV systems, LNAV/VNAV procedure NA below -15° C (5° F) and above 54° C (130° F).

EMER SAFE ALT 100 NM 16,500



LEMOORE, CALIFORNIA

36°20'N-119°57'W

LEMOORE NAS (REEVES FIELD) (KNLC)

Amdt 5 24MAY18

RNAV (GPS) RWY 14R

SW-2, 03 DEC 2020 to 31 DEC 2020

SW-2, 03 DEC 2020 to 31 DEC 2020