

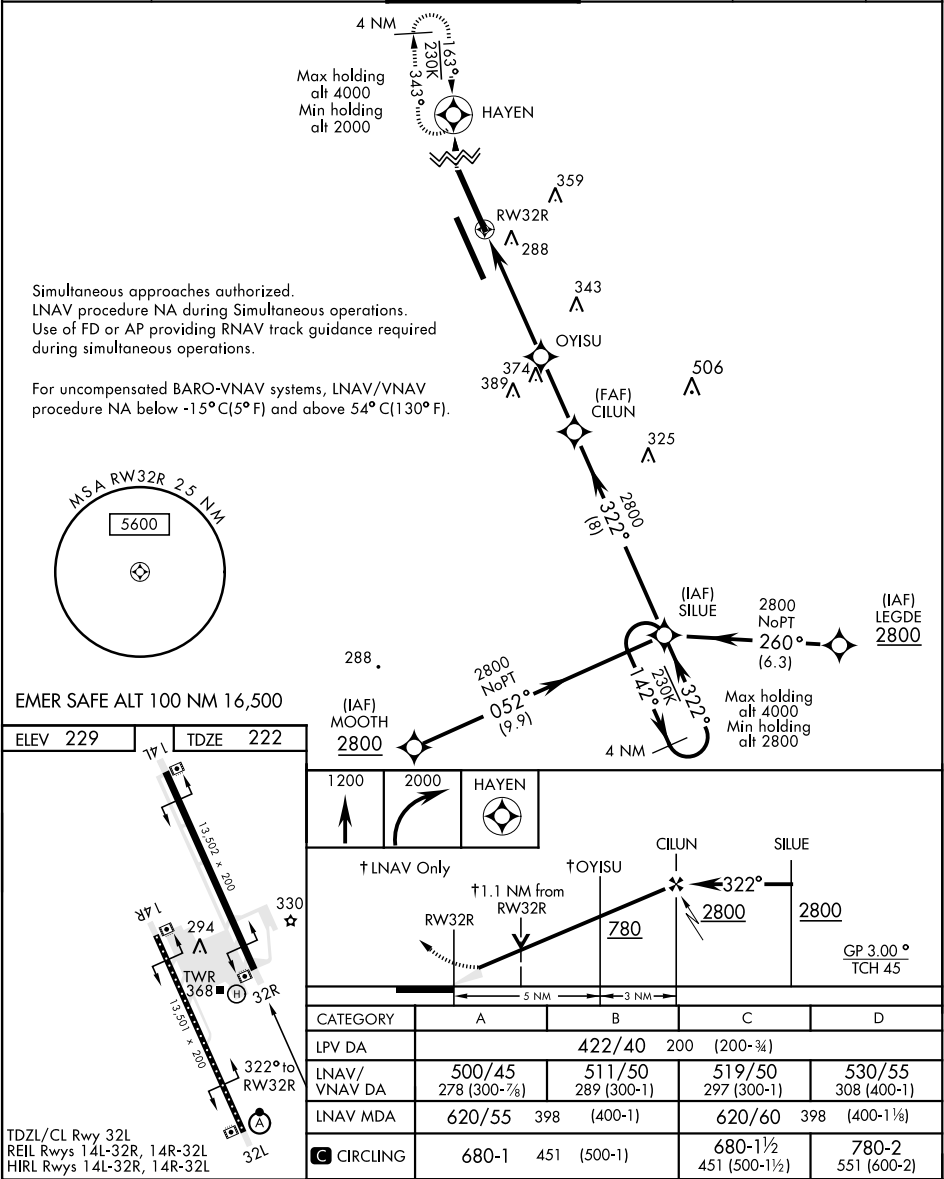
RNAV (GPS) RWY 32R

WAAS Chan <b>60335</b> <b>W32B</b>	APCH CRS <b>322°</b>	Rwy Idg <b>13,502</b> TDZE <b>222</b> Arpt Elev <b>229</b>
--	-------------------------	--

AL-5067 [USN]

LEMOORE NAS (REEVES FIELD) (KNLC)

DME/DME RNP-0.3 NA		MISSED APPROACH: Climb to 1200, then climbing right turn to 2000 direct HAYEN and hold.			
ATIS ★ <b>121.575 327.15</b>	LEMOORE APP CON <b>N124.1 S118.15 269.025</b>	LEMOORE TOWER ★ <b>128.3 360.2</b>	GND CON <b>121.65 305.2</b>	CLNC DEL <b>124.1 371.9</b>	ASR/PAR



RNAV (GPS) RWY 32R

SW-2, 03 DEC 2020 to 31 DEC 2020

SW-2, 03 DEC 2020 to 31 DEC 2020