

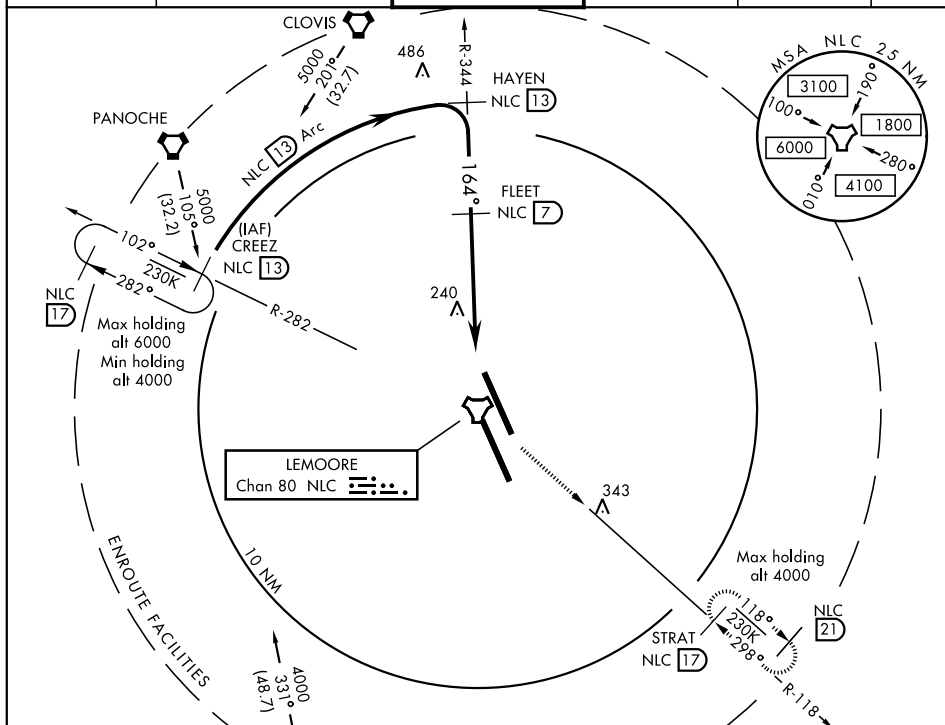
TACAN NLC Chan 80	APCH CRS 164°	Rwy Idg 13,502 TDZE 220 Arpt Elev 229
-----------------------------	-------------------------	--

AL-5067 [USN]

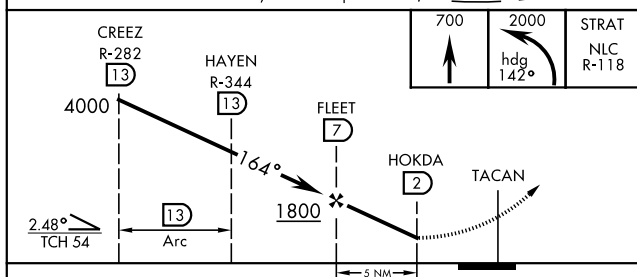
LEMOORE NAS (REEVES FIELD) (KNLC)


MISSED APPROACH: Climb to 700 then climbing left turn to 2000 via heading 142°, intercept NLC TACAN R-118 to STRAT and hold.

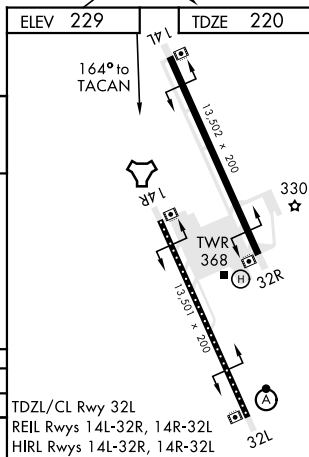
ATIS ★	LEMOORE APP CON	LEMOORE TOWER ★	GND CON	CLNC DEL	ASR/PAR
121.575 327.15	124.1 118.15 269.025	128.3 340.2	121.65 305.2	124.1 371.9	



EMERG SAFE ALT 100 NM 16,500



CATEGORY	A	B	C	D
S-14L	560/55		340	(400-1)
 CIRCLING	680-1	451 (500-1)	680-1½ 451 (500-1½)	780-2 551 (600-2)



LEMOORE, CALIFORNIA

36°20'N-119°57'W

LEMOORE NAS (REEVES FIELD) (KNLC)

Amdt 4 24MAY18

TACAN RWY 14L

SW-2, 03 DEC 2020 to 31 DEC 2020

SW-2, 03 DEC 2020 to 31 DEC 2020