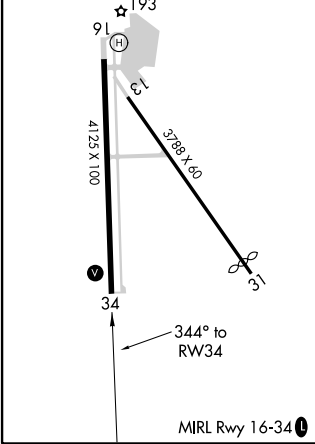
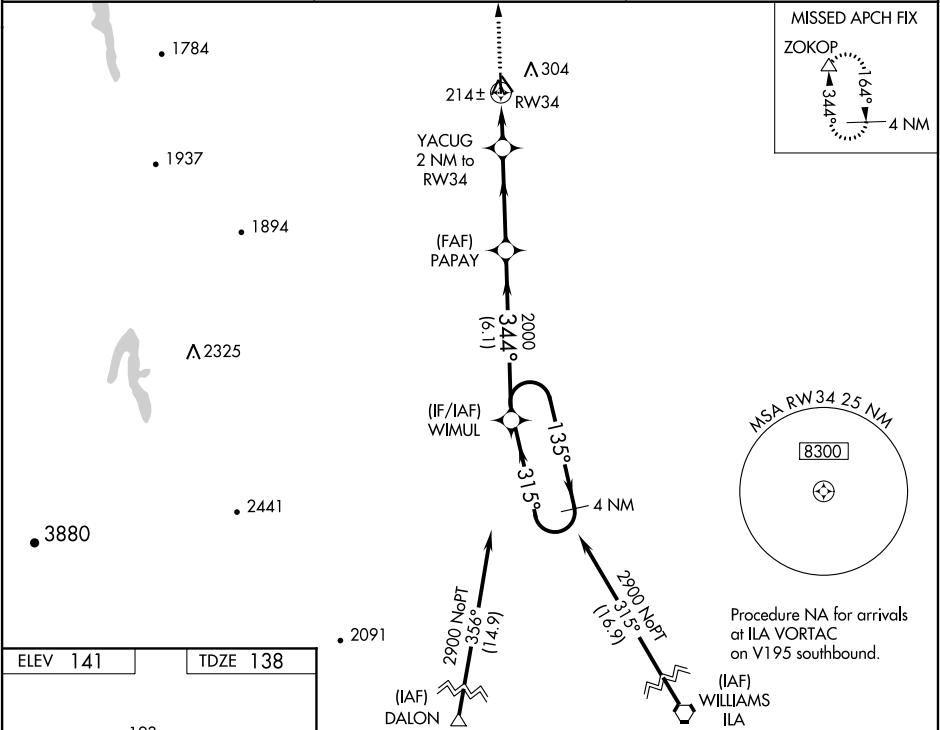


WAAS CH 78422 W34A	APP CRS 344°	Rwy Idg 4125 TDZE 138 Apt Elev 141
--	------------------------	---

RNAV (GPS) RWY 34
WILLOWS-GLENN COUNTY (WLW)

NA When Oroville Muni altimeter setting not received, procedure NA. Baro-VNAV NA. DME/DME RNP-0.3 NA. Use Oroville altimeter setting.	MISSED APPROACH: Climb to 3000 direct ZOKOP and hold.
--	--

OVE ASOS 121.425	OAKLAND CENTER 132.2 350.3	UNICOM 122.8 (CTAF)
-----------------------------------	---	--------------------------------------



VGSI and RNAV glidepath not coincident (VGSI Angle 3.00/TCH 31).				3000	ZOKOP
4 NM Holding Pattern				↑	△
2900 ← 135° 315° → 344° 2000				* INAV only.	
GP 3.00° TCH 40				* 800	
6.1 NM 3.7 NM 2 NM				RW34	
CATEGORY	A	B	C	D	
LPV DA	460-1½		322 (400-1½)		NA
LNAV/VNAV DA	460-1½		322 (400-1½)		NA
LNAV MDA	540-1		402 (400-1)		540-1½ 402 (400-1½) NA
CIRCLING	680-1		539 (600-1)		680-1½ 539 (600-1½) NA

SW-2, 03 DEC 2020 to 31 DEC 2020

SW-2, 03 DEC 2020 to 31 DEC 2020