

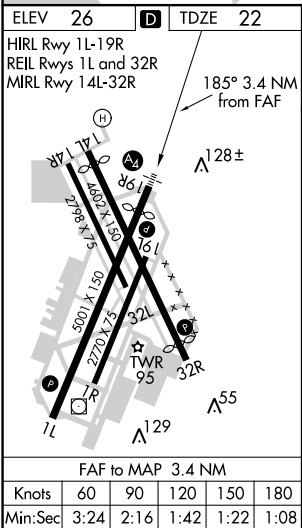
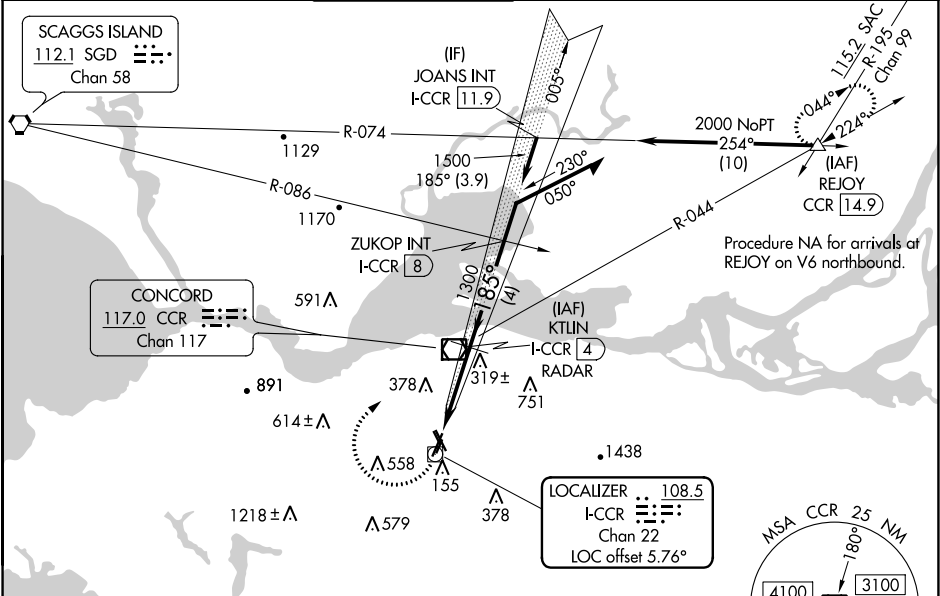
LOC/DME I-CCR	APP CRS	Rwy Idg	4400
108.5	185°	TDZE	22
Chan 22		Apt Elev	26

LDA RWY 19R

BUCHANAN FIELD (CCR)

DME or RADAR required.	MALS	MISSED APPROACH: Climbing right turn to 3000 direct CCR VOR/DME then on CCR VOR/DME R-044 to REJOY INT/CCR 14.9 DME and hold. *Missed approach requires minimum climb of 282 feet per NM to 1800.
▼ Circling NA west of Rwy 1L-19R. Circling Rwy 1L, 19L, 32R NA at night. Rwy 19R helicopter visibility reduction below ¾ SM NA. For inop ALS, increase S-19R Cats C/D visibility to 2 SM. *For inop ALS, increase S-19R Cats C/D visibility to 1½ SM.		

ATIS	TRAVIS APP CON	CONCORD TOWER*	GND CON	CLNC DEL	UNICOM
124.7	119.9 322.325	119.7 (CTAF) 257.8	121.9	118.75	122.95



3000	CCR	CCR R-044	REJOY	KTUN	VGSI and descent angles not coincident (VGSI Angle 3.00/TCH 22).
				I-CCR 4	
				RADAR	
				2800	Remain within 10 NM
					005°
					185°
					2600
					Use I-CCR DME when on the localizer course.
					1300
					1.2 NM
					2.2 NM
CATEGORY	A	B	C	D	
S-19R*	440-¾ 418 (500-¾)		440-1 418 (500-1)		
S-19R	780-¾ 758 (800-¾)	780-1 758 (800-1)	780-1½ 758 (800-1½)		
CIRCLING	780-1 754 (800-1)	780-1¼ 754 (800-1¼)	960-2¾ 934 (1000-2¾)	1300-3 1274 (1300-3)	