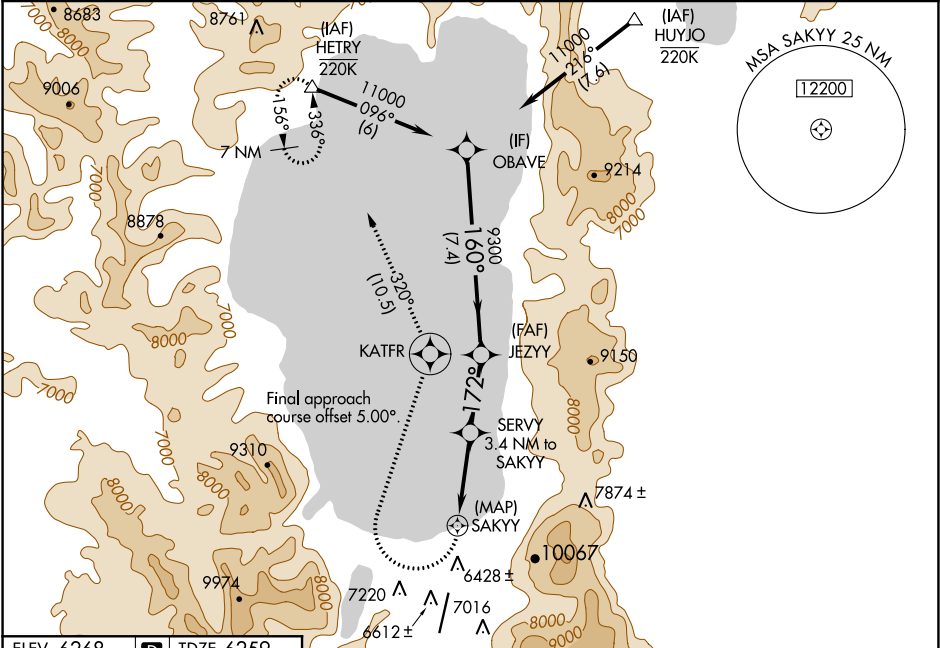


WAAS CH <b>57943</b> <b>W18A</b>	APP CRS <b>172°</b>	Rwy Idg TDZE <b>6259</b> Apt Elev <b>6268</b>
--	------------------------	---

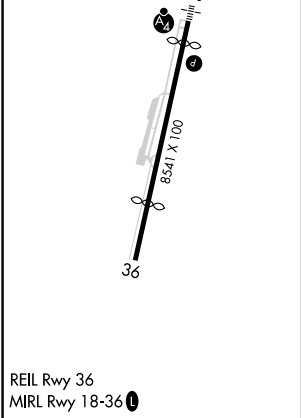
RNAV (GPS) RWY 18  
LAKE TAHOE (TVL)

RNP APCH.	MALSF	MISSED APPROACH: (Do not exceed 185K until KATFR). Climbing right turn to 10000 direct KATFR then on track 320° to HETRY and hold, continue climb-in-hold to 12000. * Missed approach requires minimum climb of 425 feet per NM to 10000.
▼ Circling NA at night. Rwy 18 helicopter visibility reduction below ¾ SM NA. When local altimeter setting not received, -13°C procedure NA. Circling NA east of Rwy 18-36.	25	

ASOS <b>124.725</b>	OAKLAND CENTER <b>127.95 316.1</b>	CLNC DEL <b>134.3</b>	CTAF <b>122.85</b>
------------------------	---------------------------------------	--------------------------	-----------------------



ELEV 6268	D	TDZE 6259
-----------	---	-----------



10000	KATFR	tr 320°	HETRY	VGSI and descent angles not coincident (VGSI Angle 3.00/TCH 48).		
				SERVY 3.4 NM to SAKYY	JEZYY	OBAVE
CATEGORY	A		B		C	D
LP MDA *	6680-3 421 (500-3)					
LP MDA	7120-3 861 (900-3)			7140-3 881 (900-3)		7320-3 1061 (1100-3)
LNAV MDA *	6980-3 721 (800-3)					7560-3 1301 (1300-3)
LNAV MDA	7280-3 1021 (1100-3)		7620-3 1361 (1400-3)		8160-3 1901 (1900-3)	
CIRCLING	7420-3 1152 (1200-3)		7680-3 1412 (1500-3)		8160-3 1892 (1900-3)	
					NA	

SW-2, 03 DEC 2020 to 31 DEC 2020

SW-2, 03 DEC 2020 to 31 DEC 2020