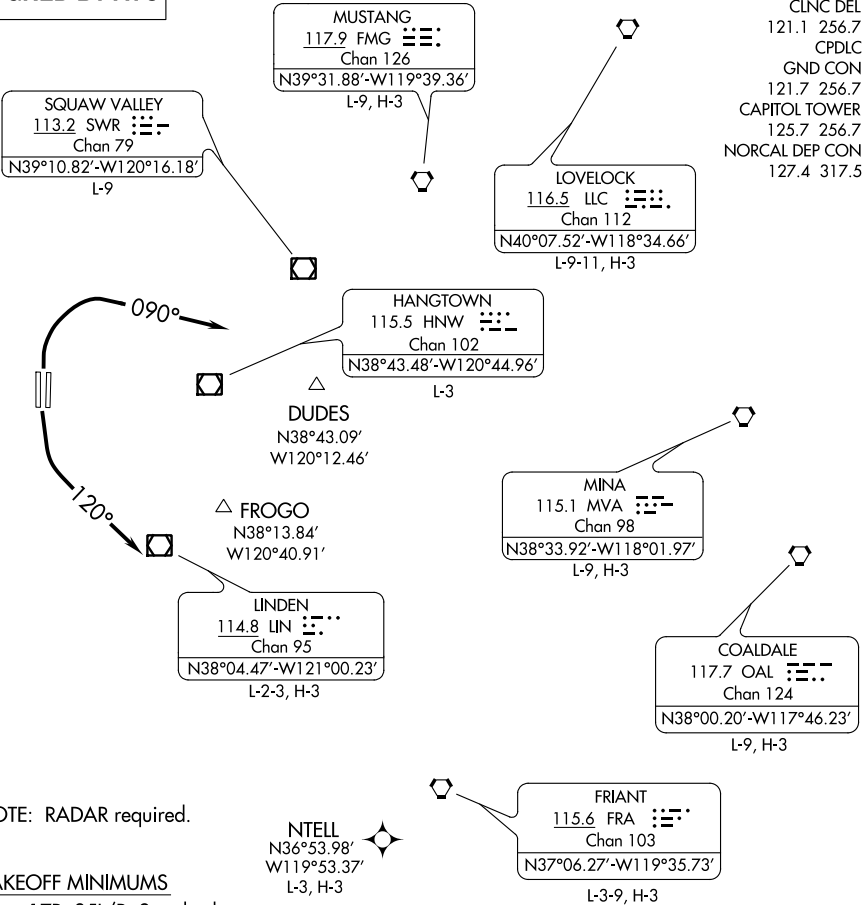


(FROGO1.FROGO) 20310
FROGO ONE DEPARTURE

AL-5490 (FAA)

SACRAMENTO INTL (SMF)
SACRAMENTO, CALIFORNIA

**TOP ALTITUDE:
ASSIGNED BY ATC**



NOTE: RADAR required.

TAKEOFF MINIMUMS

Rwys 17R, 35L/R: Standard.
Rwy 17L: Standard with minimum climb of 220' per NM to 700.

NOTE: Chart not to scale.



DEPARTURE ROUTE DESCRIPTION

TAKEOFF RUNWAYS 17L/R: Climbing left turn heading 120°, or as assigned by ATC, for RADAR vectors to assigned route/fix, thence...
TAKEOFF RUNWAYS 35L/R: Climbing right turn heading 090°, or as assigned by ATC, for RADAR vectors to assigned route/fix, thence...

...maintain ATC assigned altitude. Expect filed altitude ten minutes after departure.

FROGO ONE DEPARTURE
(FROGO1.FROGO) 10SEP20

SACRAMENTO, CALIFORNIA
SACRAMENTO INTL (SMF)

SW-2, 03 DEC 2020 to 31 DEC 2020

SW-2, 03 DEC 2020 to 31 DEC 2020