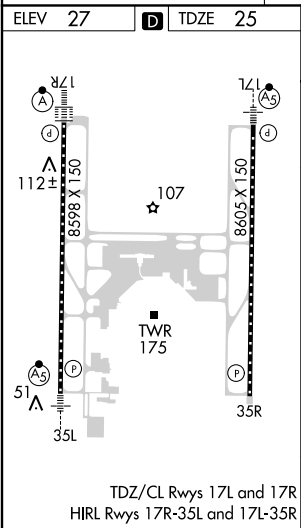
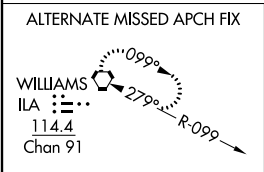
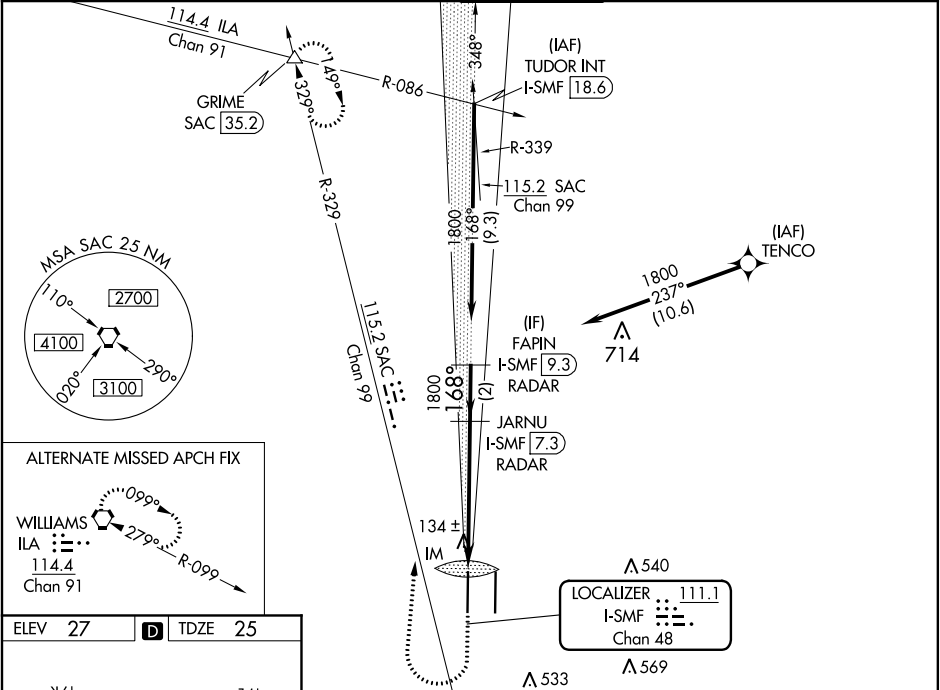


LOC/DME I-SMF <b>111.1</b> Chan <b>48</b>	APP CRS <b>168°</b>	Rwy Idg <b>8598</b> TDZE <b>25</b> Apt Elev <b>27</b>	ILS RWY 17R (CAT II & III) SACRAMENTO INTL (SMF')	
---	------------------------	---	--	--

RNAV 1-GPS or RADAR required for procedure entry. From TENCO: RNAV 1-GPS required. DME or RADAR required.		ALSIF-2	MISSED APPROACH: Climb to 500 then climbing right turn to 2000 on heading 350° and SAC VORTAC R-329 to GRIME INT/SAC 35.2 DME and hold.
	Simultaneous approach authorized.		

D-ATIS <b>126.75</b>	NORCAL APP CON <b>125.4 259.1 (W-NE) 125.25 257.9 (SW)</b> <b>127.4 317.5 (E-SE)</b>		CAPITOL TOWER <b>125.7 256.7</b>	GND CON <b>121.7 256.7</b>	CLNC DEL <b>121.1 256.7</b>	CPDLC
-------------------------	--	--	-------------------------------------	-------------------------------	--------------------------------	-------



500	2000	SAC R-329	GRIME	VGSI and ILS glidepath not coincident (VGSI Angle 3.00/TCH 72).	
hdg 350°				JARNU I-SMF [7.3] RADAR	FAPIN I-SMF [9.3] RADAR
IM 122				1800	1800
1074'		5.4 NM	2 NM	GS 3.00° TCH 57	
CATEGORY	A	B	C	D	
S-ILS 17R	CAT II RA 103/12 100 DA 125				
S-ILS 17R	CAT III RVR 06				

CATEGORY II & III ILS - SPECIAL AIRCREW & AIRCRAFT CERTIFICATION REQUIRED