

LOC/DME I-MDK 111.75 Chan 54 (Y)	APP CRS 168°	Rwy Idg 8605 TDZE 27 Apt Elev 27
--	------------------------	---

ILS or LOC RWY 17L
SACRAMENTO INTL(SMF)

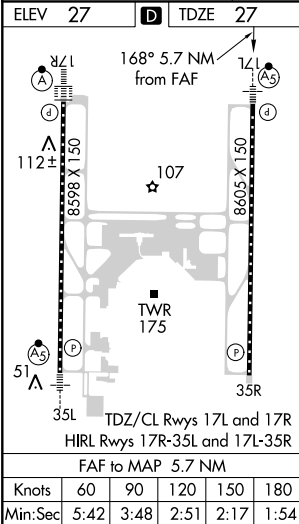
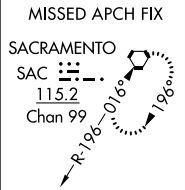
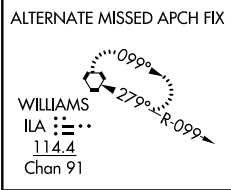
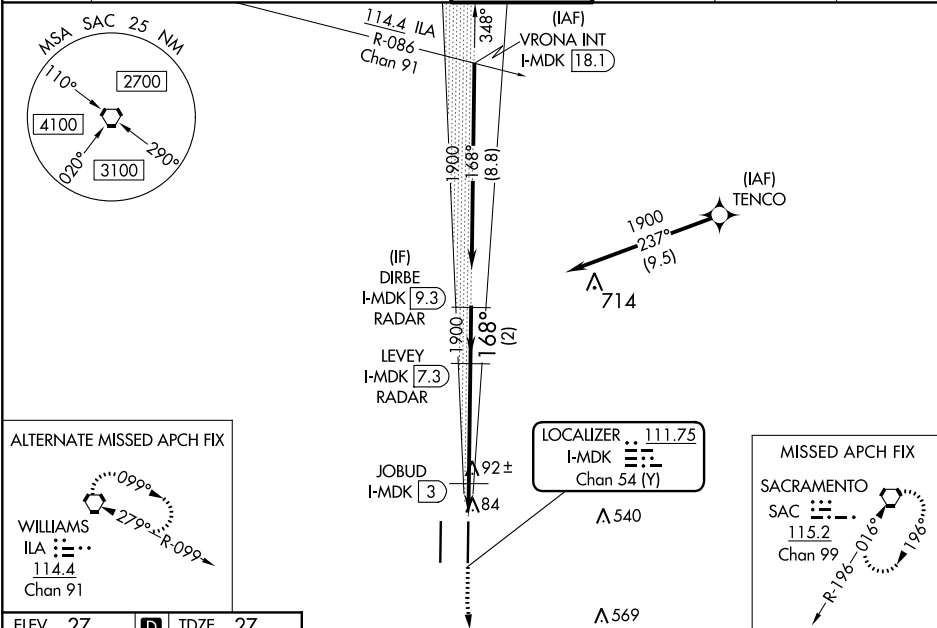
RNAV 1-GPS or RADAR required for procedure entry.
From TENCO: RNAV 1-GPS required. DME or RADAR required.

Simultaneous approach authorized. Circling NA west of Rwy 17L-35R.
For inop ALS, increase S-LOC 17L Cat C/D visibility to 1 $\frac{3}{8}$ SM and S-LOC 17L JOBUD fix minimums Cat C/D visibility to RVR 4500.

MALSR

MISSED APPROACH: Climb to 500 then climbing left turn to 3000 direct SAC VORTAC and hold.

D-ATIS 126.75	NORCAL APP CON (W-NE) 125.25 257.9 (SW) 127.4 317.5 (E-SE)	CAPITOL TOWER 125.7 256.7	GND CON 121.7 256.7	CLNC DEL 121.1 256.7	CPDLC
-------------------------	--	--	--------------------------------------	---------------------------------------	-------



ELEV 27	TDZE 27	500	3000	SAC	VGSI and ILS glidepath not coincident (VGSI Angle 3.00/TCH 64).	LEVEY I-MDK [7.3] RADAR	DIRBE I-MDK [9.3] RADAR
		*LOC only					
		I-MDK [1.6]		I-MDK [2.4]		I-MDK [3]	
		0.8 NM		0.6 NM		4.3 NM	
		A		B		C	
		S-ILS 17L		227/18		200 (200- $\frac{1}{2}$)	
		S-LOC 17L		500/24		473 (500- $\frac{1}{2}$)	
		C CIRCLING		500-1		473 (500-1)	
				500-1 $\frac{1}{2}$		840-2 $\frac{3}{4}$	
				473 (500-1 $\frac{1}{2}$)		813 (900-2 $\frac{3}{4}$)	
				JOBUD FIX MINIMUMS (DME REQUIRED)			
		S-LOC 17L		340/24		313 (400- $\frac{1}{2}$)	
		C CIRCLING		400-1		480-1	
				373 (400-1)		453 (500-1)	
				480-1 $\frac{1}{2}$		840-2 $\frac{3}{4}$	
				453 (500-1 $\frac{1}{2}$)		813 (900-2 $\frac{3}{4}$)	

SW-2, 03 DEC 2020 to 31 DEC 2020

SW-2, 03 DEC 2020 to 31 DEC 2020